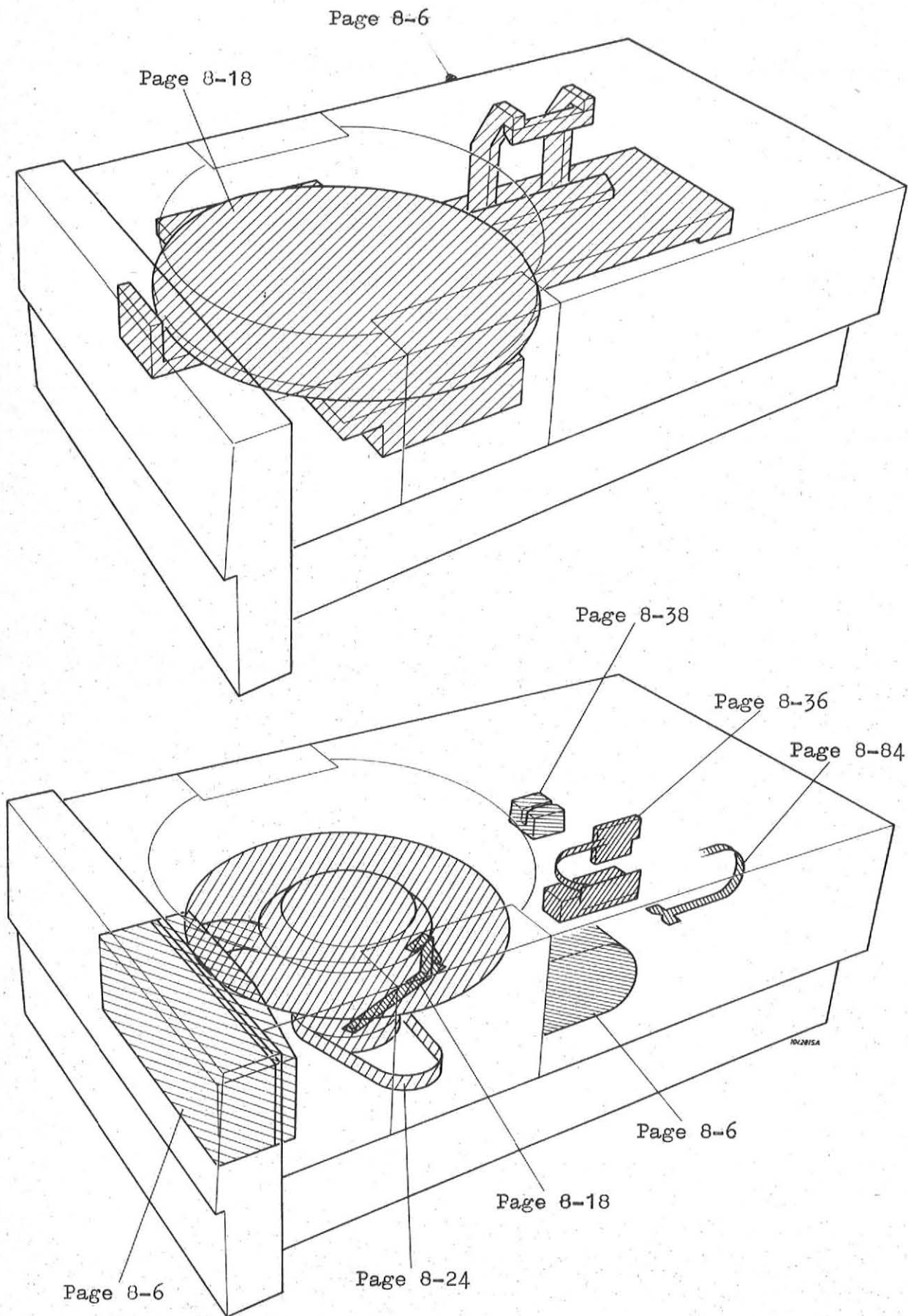


Cartridge Disk Drive Unit Vol. VIII: Parts List

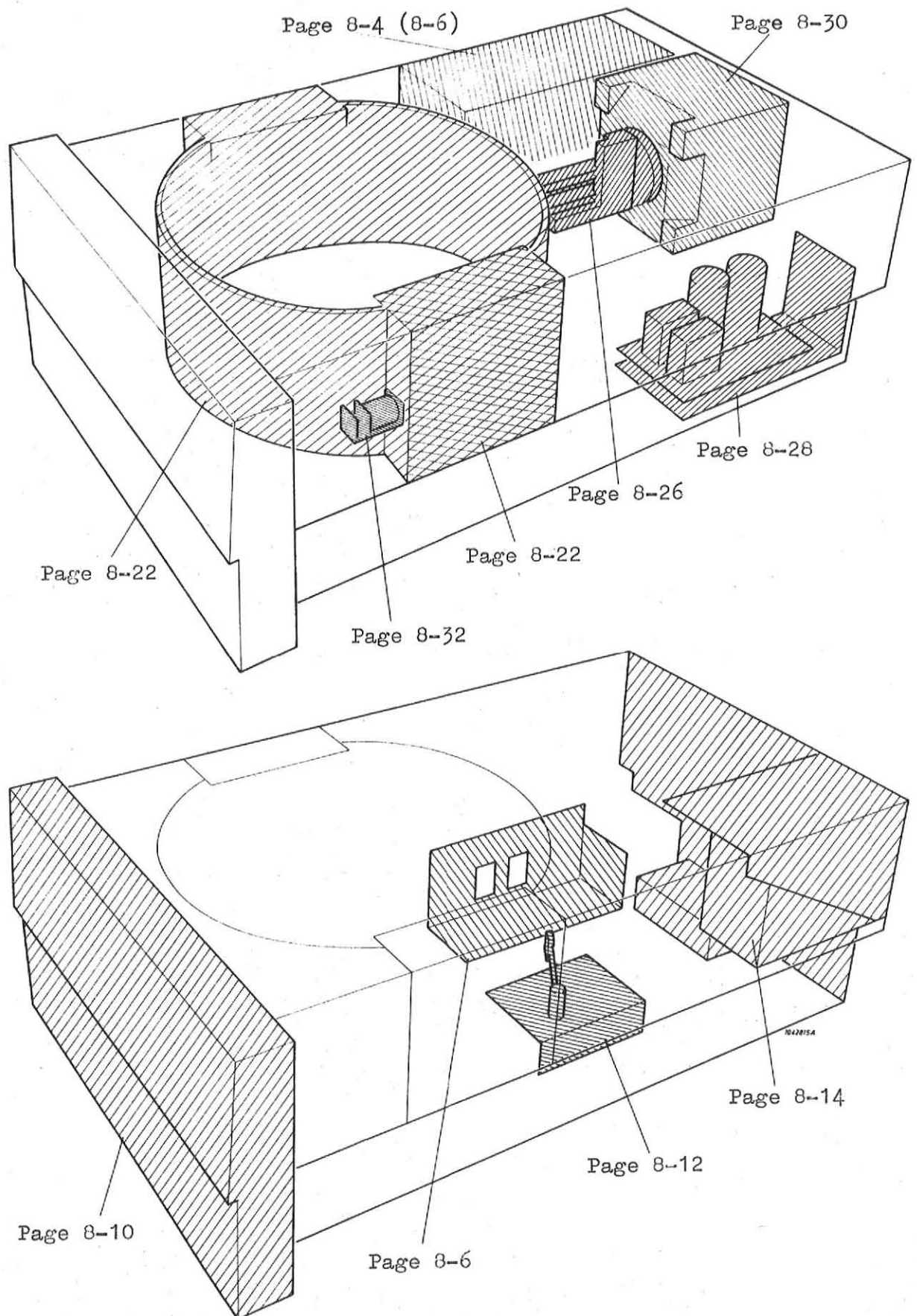


**Data
Systems**

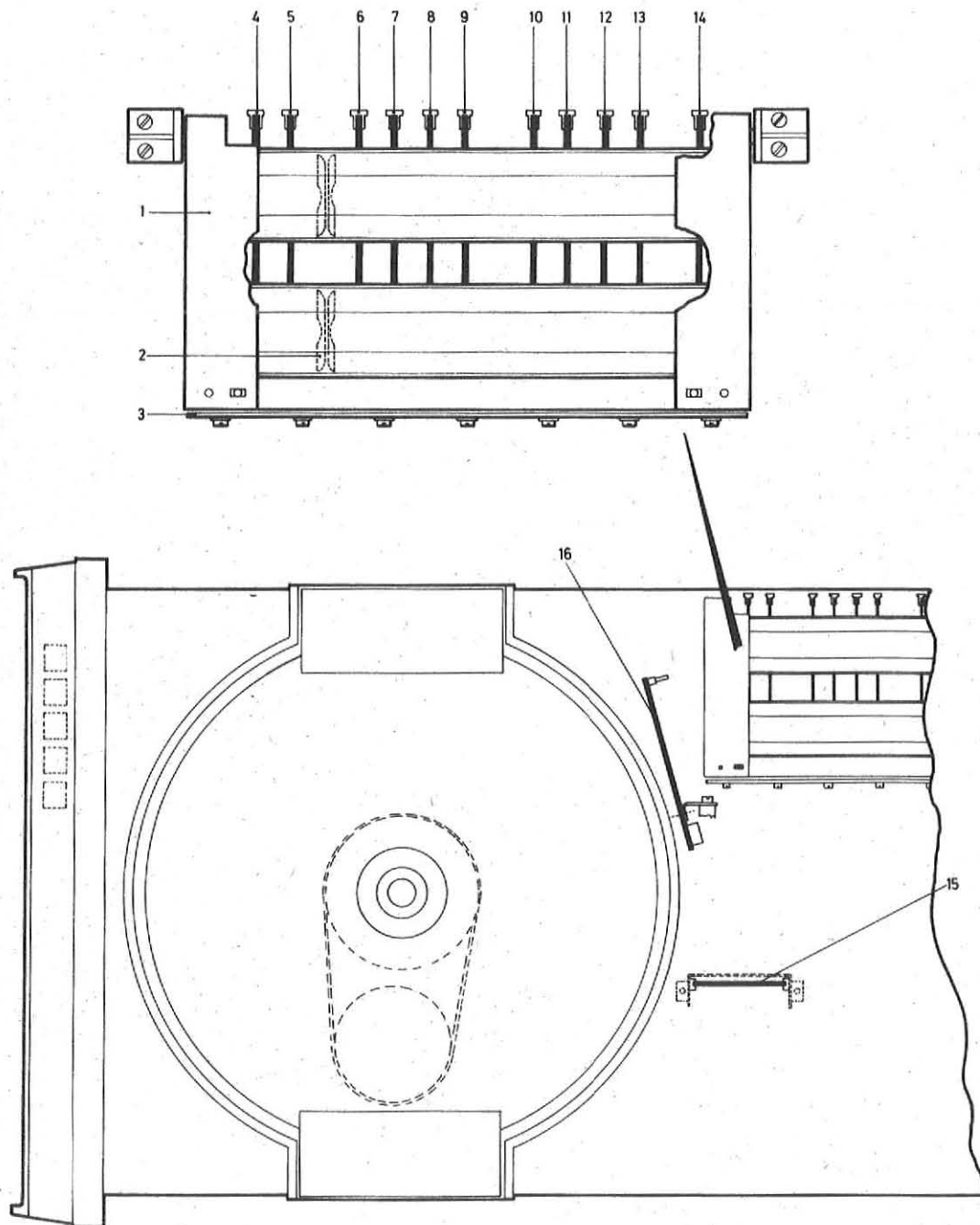
LOCATOR



LOCATOR



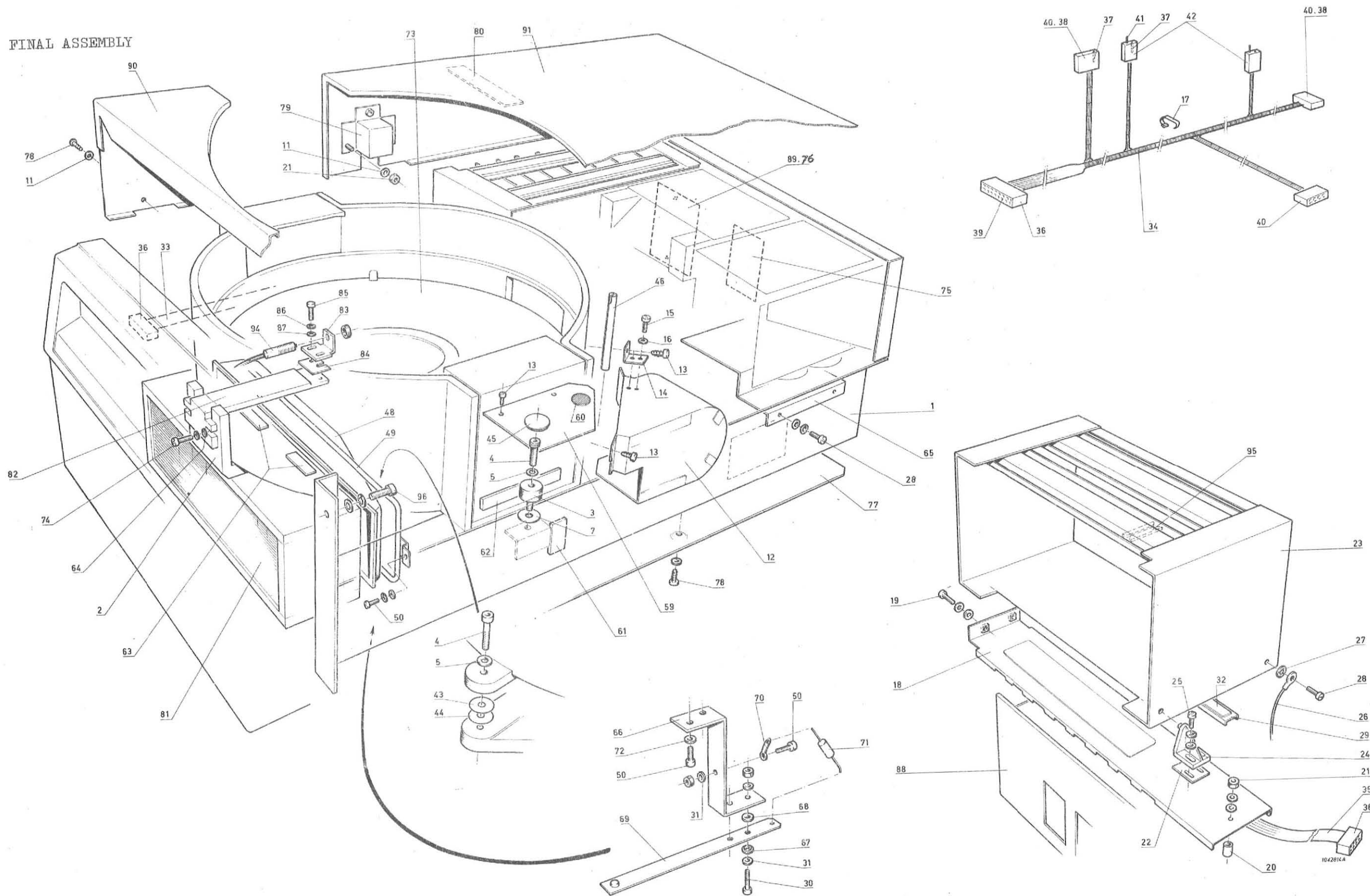
CARD LAY-OUT CDD 002 PH. 1



CARD LAY-OUT CDD 002 PH.1

Item nr	Part number	Description	Qty. per ass'y
A	5122 299 13700	Final assembly, CDD 002 PH. 1	1
1C	5122 289 96050	Rack, boards	1
2C	4322 026 70040	Card guide	52
3B	5122 289 98170	Rear board, wired	1
4B	5122 289 97850	P.C.B.A. 1A24, see page 8-78	1
5B	5122 289 95930	P.C.B.A. 1M63, see page 8-52	1
6B	5122 289 96790	P.C.B.A. 2L00, see page 8-56	1
7B	5122 289 96780	P.C.B.A. 1L99, see page 8-64	1
8B	5122 289 96740	P.C.B.A. 1M66, see page 8-74	1
9B	5122 289 96750	P.C.B.A. 1L97, see page 8-46	1
10B	5122 289 96750	P.C.B.A. 1M67, see page 8-48	1
11B	5122 289 96770	P.C.B.A. 1L98, see page 8-44	1
12B	5122 289 96730	P.C.B.A. 1M65, see page 8-58	1
13B	5122 289 96720	P.C.B.A. 1M64, see page 8-66	1
14B	5122 289 96710	P.C.B.A. 1A22, see page 8-60	1
15B	5122 282 51550	P.C.B.A. Meander, see page 8-50	1
16B	5122 289 96440	P.C.B.A. Read Preamplifier, see page 8-40	1
-	5122 289 97290	P.C.B.A. Power supply, see page 8-7(8-14)	1
-	5122 289 96480	P.C.B.A. Driver, see page 8-82(8-14)	1

FINAL ASSEMBLY

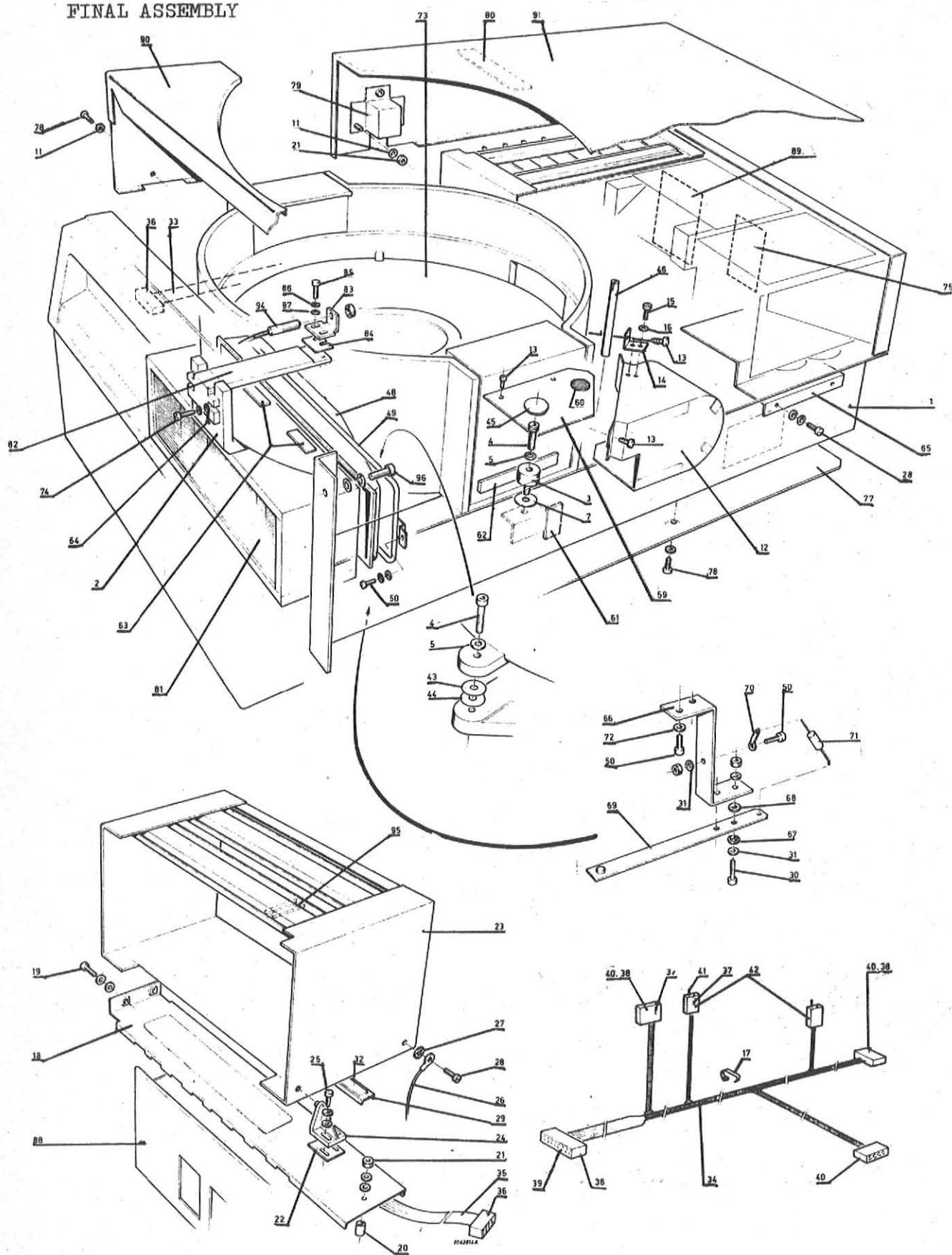


X1215

FINAL ASSEMBLY

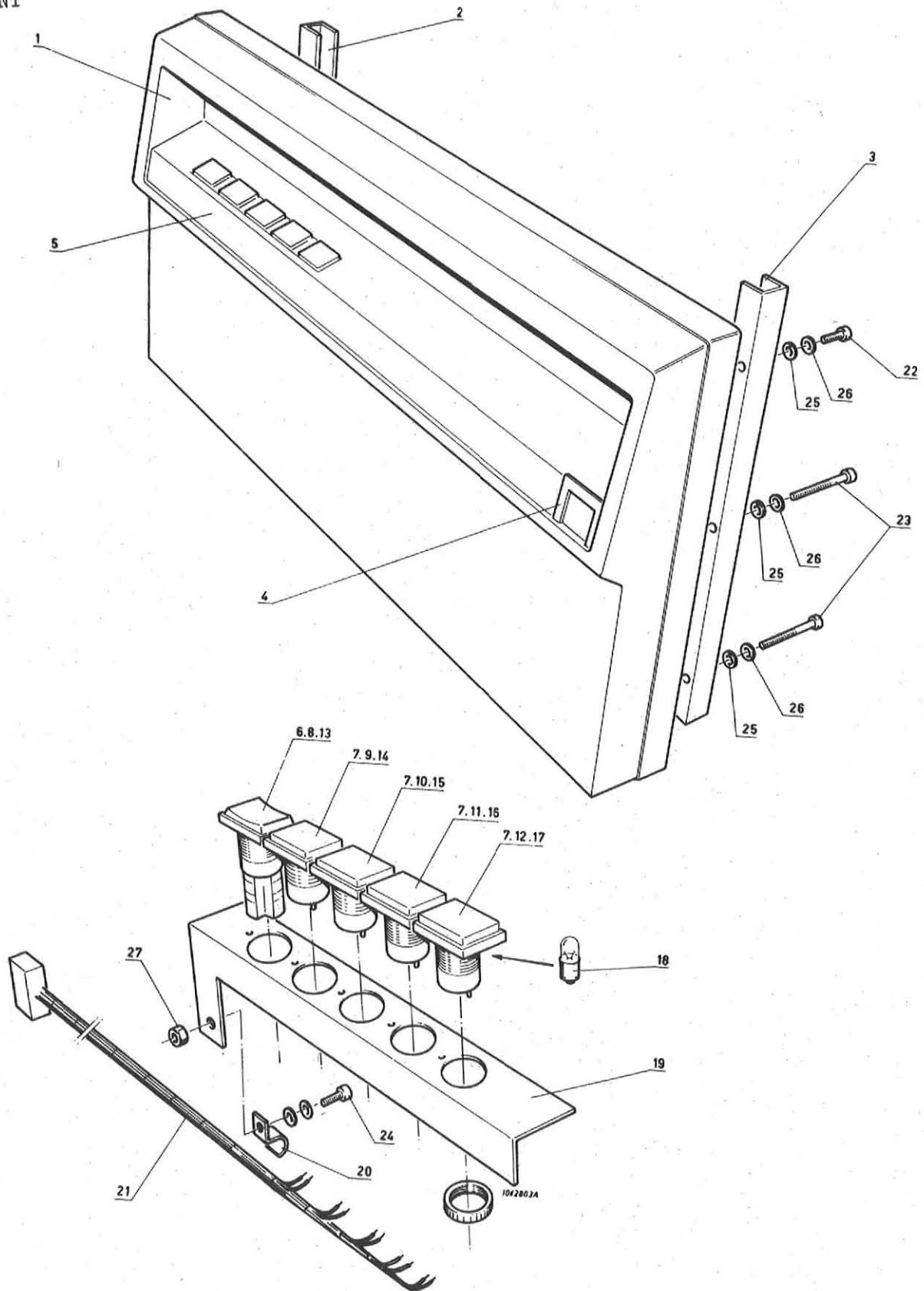
Item nr	Part number	Description	Qty. per ass'y
A	5122 299 13700	Final assembly	1
B	5122 299 08800	Main assembly	1
1C	5122 289 97520	Frame assembly	1
2C	5122 299 08900	Basic plate	1
3C	2622 890 11312	Buffer	2
4C	2522 006 03054	Socket screw	5
5C	2522 600 16147	Washer 4 x 12.5	6
6C	2522 006 03059	Allen screw M 6 x 40	1
7C	2522 600 16036	Washer 6.4 x 18	6
8C	2522 609 02006	Pressure washer 6.2 MM	3
9C	2522 600 27044	Washer 10.5 x 21 x 2.5	1
10C	2522 032 64124	Screw M 4 x 10	2
11C	2522 600 16026	Washer 4.3 x 9	28
12C	5122 289 97190	Return housing	1
13C	2522 163 01023	Self-tapping screw 6N x $\frac{1}{4}$ "	5
14C	5122 200 44010	Bracket	1
15C	2522 004 02039	Screw M4 x 8	3
16C	2522 613 03009	Washer 4.1 x 7.1	12
17C	2422 015 05037	Binding wire	4
18C	5122 289 97490	Sheet	1
19C	2522 004 02041	Screw M4 x 10	2
20C	2522 627 04045	Spacer	1
21C	2522 401 60011	Nut M4	13
22C	5122 200 44850	Sheet	2
23C	5122 289 96050	Electronics box	1
24C	5122 203 21100	Hinge block	2
25C	2522 004 02042	Screw M 4 x 12	4
26C	5122 289 97230	Earth lead	2
27C	2522 608 02001	Washer 3.2 x 6	3
28C	2522 004 02024	Screw M 3 x 6	6
29C	5122 200 38410	Relief bracket	1
30C	2522 004 02026	Screw M 3 x 10	6
31C	2522 600 16017	Washer 3.2 x 7	14
32C	0822 086 24001	Self-adhesive strip long 0.3 m	1
33C	5122 289 96870	Cable P2	1
34C	5122 289 96830	Cable P3	1
35C	5122 289 96840	Cable P8	1
36C	2422 034 10794	Connector 20 pins	6
37D	2422 034 10789	Socket connector	52
38D	2422 034 10803	Position key	10
39D	2422 034 10788	Socket connector	54
40D	2422 034 10908	Connector 6 pins	3
41D	2422 034 10913	Contact pin	20
42D	2422 034 10797	Connector 2 pins	2
43C	5122 200 16800	Spacer ring 0.1 mm	6
44C	5122 233 11100	Spacer ring 0.2 mm	12
45C	2412 015 09064	Stop 15.6 x 20	2
46C	5122 200 39670	Guide pin	1
47C	2522 613 03005	Spring ring 3.1 x 5.7	6
48C	5122 289 87580	Intake house	1

FINAL ASSEMBLY



Item nr	Part number	Description	Qty. per ass'y
49C	5122 289 87600	Pressure plate	1
50C	2522 004 02025	Screw M 3 x 8	2
51C	5122 200 44150	Sticker plugs	1
52C	5122 200 43240	Sticker final assembly	1
53C	2822 100 23219	Sticker	1
54C	5122 200 46370	Sticker	1
55C	2522 004 02052	Screw M 5 x 6	
56C	2522 613 01012	Spring ring 5.1 x 8.8	1
57C	2522 608 02003	Earth ring 5.3 x 10	1
58C	2522 608 02002	Earth ring 4.3 x 8	1
59C	5122 200 45440	Sealing sheet	1
60C	5122 200 13020	Damping sheet	1
61C	2422 015 05129	Cable clamp ZET 0375.5	1
62C	0822 081 44003	Foam rubber strip 70 x 10 x 3 mm	2
63C	5122 200 48880	Rubber strip	2
64C	2522 600 16027	Washer 4.3 x 12	5
65C	5122 289 98780	Screening plate	1
66C	5122 200 38420	Bracket	1
67C	9390 000 40112	Insulation bush	2
68C	2522 600 28026	Washer paper 4.3 x 9	2
69C	5122 289 94050	Contact spring	1
70C	2422 015 01002	Solder tag M 3	1
71C	2322 152 51002	Resistor 1K 1% $\frac{1}{4}W$	1
72C	2522 600 16018	Washer 3.2 x 9	2
73C	5122 289 89340	Bottom	1
74C	2522 004 02045	Screw M 4 x 20	3
75C	5122 010 82113	Sticker	1
76C	3522 074 08150	Breaking screw M 2.5	2
77C	5122 200 36930	Bottom plate	1
78C	2522 163 01025	Tap screw 6 N x 9.5	10
79C	5122 200 26000	Screening cap	2
80C	1222 100 98258	Self adhesive foam rubber 0.06 m ²	1
81C	5122 021 00231	Air filter	1
82B	5122 200 37660	Bracket for Index	1
83B	5122 289 97050	Support for Index	1
84B	5122 200 37670	Spacer	8
85B	2522 004 02027	Screw M 3 x 12	2
86B	2522 600 16017	Washer 3.2 x 7	2
87B	2522 613 03005	Spring ring 3.1 x 5.7	2
88B	5122 289 98000	Connecting cable	1
89B	5122 289 97340	Indication sticker	1
90B	5122 290 05220	Front cover	1
91B	5122 290 05230	Rear cover	1
92B	5122 200 43430	Decorative strip	1
93B	5122 200 43440	Numbering plate	1
94D	5122 289 97540	Pick up assembly	1
95C	4322 026 70040	Card guide	52
96C	2522 032 64207	Bolt M 6 x 10	4

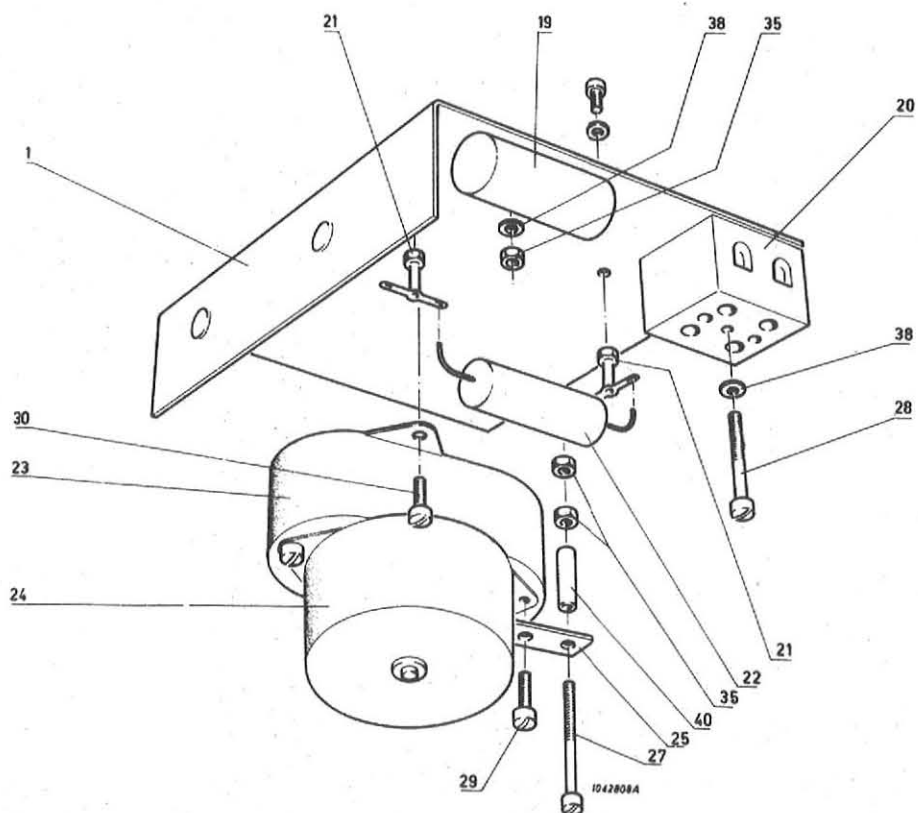
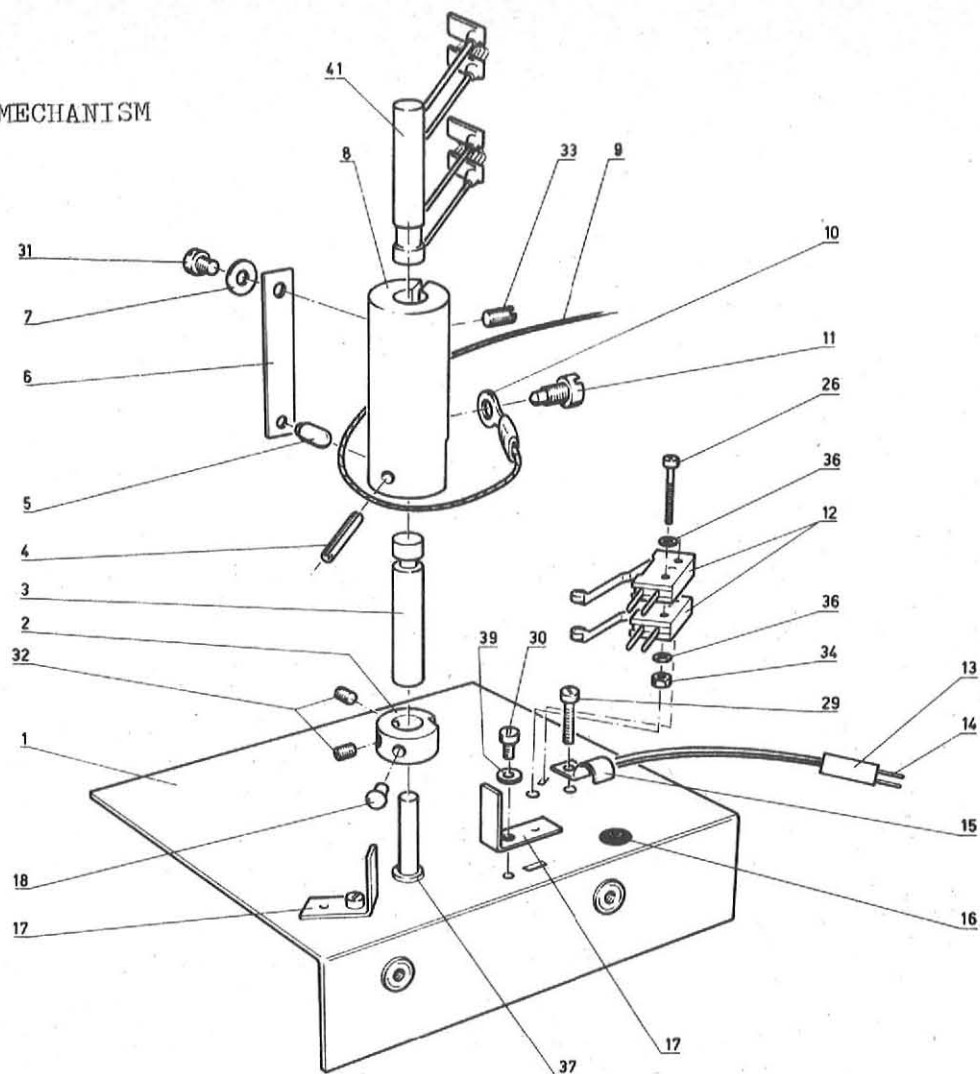
FRONT



FRONT

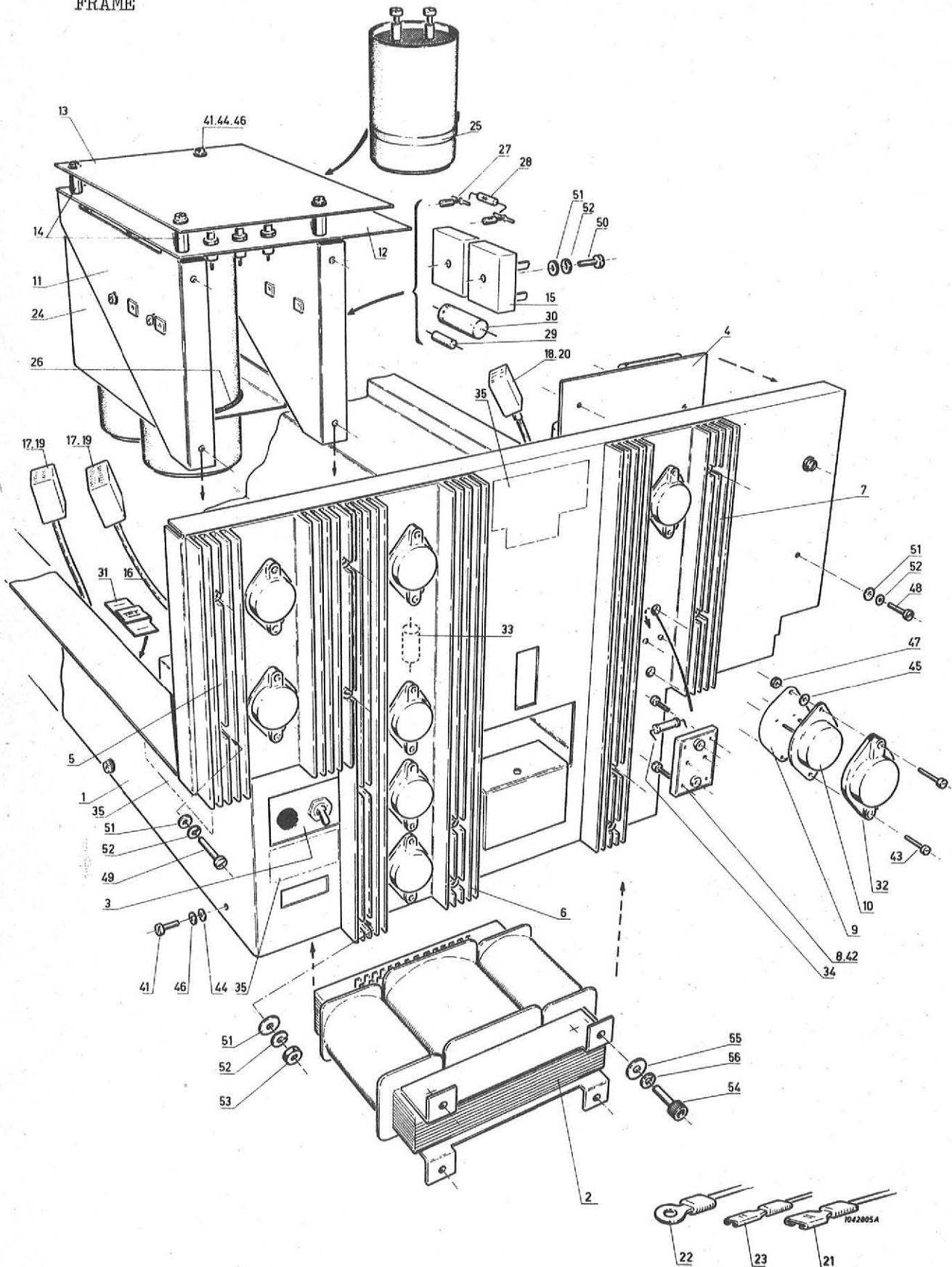
Item nr	Part number	Description	Qty. per ass'y
A	5122 299 13700	Final assembly	1
1B	5122 200 35750	Front	1
2B	5122 289 95500	Fixing beam, left	1
3B	2522 289 95490	Fixing beam, right	1
4B	5122 200 35830	Holder	1
5B	5122 289 96430	Ornamental strip, assy	1
6C	2432 121 00054	Push button switch	1
7B	2432 470 00055	Lamp holder	1
8C	2432 471 00119	Lens cap, transparent	1
9C	2432 471 00115	Lens cap, red	1
10C	2432 471 00114	Lens cap, transparent	1
11C	2432 471 00116	Lens cap, yellow	1
12B	2432 471 00115	Lens cap, red, 31 - 903	1
13C	5122 200 33760	Text plate, start-stop	1
14C	5122 200 35810	Text plate, power	1
15C	5122 200 35820	Text plate, ready	1
16C	5122 200 33810	Text plate, cart. exch.	1
17C	5122 200 33820	Text plate, fault	1
18C	9236 669 18300	Lamp, Type 386, 14V - 80mA	5
19C	5122 200 36360	Mounting strip	1
20C	2413 015 00139	Cable clamp	1
21C	5122 289 99020	Cableform, front	1
22B	2522 004 02041	Screw, M4x10	2
23B	2522 004 02049	Screw, M4x35	4
24C	2522 004 02025	Screw, M3x8	4
25B	2522 613 01009	Spring ring, 4,1 x 7,1	6
26B	2522 600 16026	Washer, 4,3 x 9	6
27C	2522 401 60008	Nut, M3	4

CLEANMECHANISM



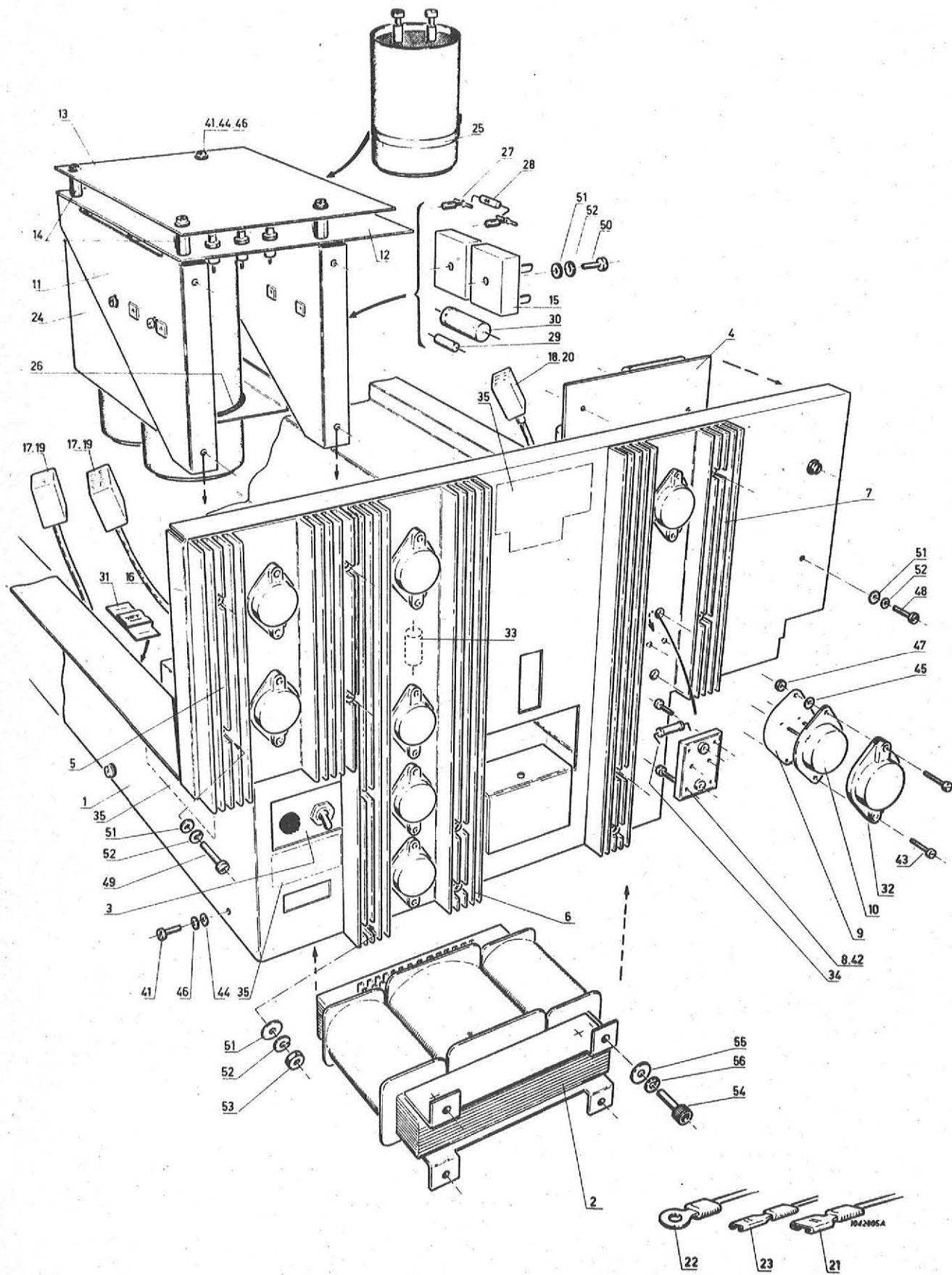
Item nr	Part number	Description	Qty. per ass'y
B	5122 299 08800	Main assembly	1
C	5122 289 88420	Cleanmechanism	1
1D	5122 200 18960	Bracket	1
2D	5122 200 18810	Adjusting ring	1
3D	5122 200 18720	Shaft	1
4D	2522 677 01045	Clamping bush	1
5D	5122 200 26850	Locking pin	1
6D	5122 200 26860	Spring flat	1
7D	5122 200 26880	Ring	1
8D	5122 200 18740	Coupling	1
9D	0122 135 03001	Steel wire with nylon imm. \varnothing , 0,15M	1
10D	2422 015 02156	Eye cable tag	1
11D	5122 200 26890	Locking screw	1
12D	2411 123 02077	Micro switch assy	2
13D	2422 034 10908	Connector housing	1
14D	2422 034 10913	Contact pin	4
15D	2413 015 00136	Cable clamp	1
16D	2422 015 09034	Crommet	1
17D	5122 200 26870	Stop bracket	2
18D	5122 200 26900	CAM	1
19D	2012 500 10002	Anti-interference capacitor	1
20D	2412 013 00021	Connecting block, 2 pins	1
21D	2413 015 00976	Mounting support	2
22D	2222 277 81563	Capacitor, 0,0056 μ F	1
23D	9904 130 01016	Gear box, 125: 3	1
24D	9904 111 04131	Synchronous motor	1
25D	5122 200 26840	Adjusting plate	1
26D	2522 004 02009	Screw, M2x20	2
27D	2522 004 02033	Screw, M3x30	1
28D	2522 004 02031	Screw, M3x20	1
29D	2522 004 02025	Screw, M3x8	2
30D	2522 004 02022	Screw, M3x4	4
31D	2522 004 02037	Screw, M4x5	1
32D	2522 043 02038	Adjusting screw, M3x5	2
33D	2522 043 02047	Adjusting screw, M4x5	1
34D	2522 401 60005	Nut, M2	2
35D	2522 401 60008	Nut, M3	4
36D	2522 600 16151	Washer, 2,2x5	4
37D	2522 600 55116	Washer, nylon, 4,3 x 9 x 1	1
38D	2522 600 16016	Washer, 3,2 x 6	1
39D	2522 600 16017	Washer, 3,2 x 7	2
40D	2522 627 01023	Distance piece, 3,1 x 5 x 12	1
41C	5122 289 88410	Brush shaft, assy	1

FRAME



Item nr	Part number	Description	Qty. per ass'y
B	5122 299 08800	Main assembly CDD	1
C	5122 289 97520	Frame	1
D1	5122 289 96880	Frame	1
D2	3522 815 75900	Transformer TC 962/9	1
D3	5122 289 96910	Switching unit	1
D4	5122 289 97290	PCBA Power supply	1
D5	5122 200 37900	Heat sink no. 1	1
D6	5122 200 37910	Heat sink no. 2	1
D7	5122 200 37920	Heat sink no. 3	1
D8	4022 107 11260	Transistor path	8
D9	9390 000 50112	Mica plate	8
D10	9330 226 60112	Transistor 2N3442	8
D11	5122 289 97200	Bracket	2
D12	5122 289 96480	PCBA driver	1
D13	5122 200 38310	Insulating plate	1
D14	5122 200 38320	Spacer	4
D15	9332 351 50682	Bridge rectifier G 775-2	2
D16	5122 289 97530	Cable, back plate	1
D24	5122 290 03290	Supporting plate	1
D25	2422 015 05006	Strip TX 15	1
D26	0822 026 98125	PVC sectional strip 7 mm \varnothing 0,4 m	1
D27	2413 015 00976	Mounting support	5
D28	9330 458 51113	Diode BYX 36	1
D29	2322 325 37101	Resistor, 100E 4W 5%	1
D30	2012 001 00207	Capacitor 100 μ F 63V	1
D31	2513 483 04014	Speed unit type SNU - 1219	12
D32	2412 490 00034	Insulating cap, T03	8
D33	2122 256 00035	Resistor 0,5E 25W 1%	1
D34	2322 152 54642	Resistor 4 K ohm 0,25W 1%	4
D35	5122 200 43070	Identification label	1
D41	2522 004 02024	Screw M 3 x 6	6
D42	2522 004 02025	Screw M 3 x 8	18
D43	2522 004 02031	Screw M 3 x 20	16
D44	2522 600 16017	Ring 3,2 x 7	24
D45	2522 600 16018	Ring 3,2 x 9	16
D46	2522 613 03005	Washer 3,1 x 5,7	8
D47	2522 401 60008	Unit M3	2
D48	2522 004 02041	Screw M4 x 10	6
D49	2522 004 02042	Screw M 4 x 12	4
D50	2522 004 02043	Screw M 4 x 15	2
D51	2522 600 16026	Ring 4,3 x 9	14
D52	2522 613 03009	Washer 4,1 x 7,1	14
D53	2522 401 60011	Unit M4	8
D54	2522 006 03205	Allen screw M 5 x 10	4
D55	2522 600 16029	Ring 5,3 x 10	4
D56	2522 613 03012	Washer 5,1 x 8,7	4
E17	2422 034 10794	Connector housing 20 p	2
E18	2422 034 10908	Connector housing 6 p	1
E19	2422 034 10788	Contact socket 47439	38
E20	2422 034 10789	Contact socket 47565	6

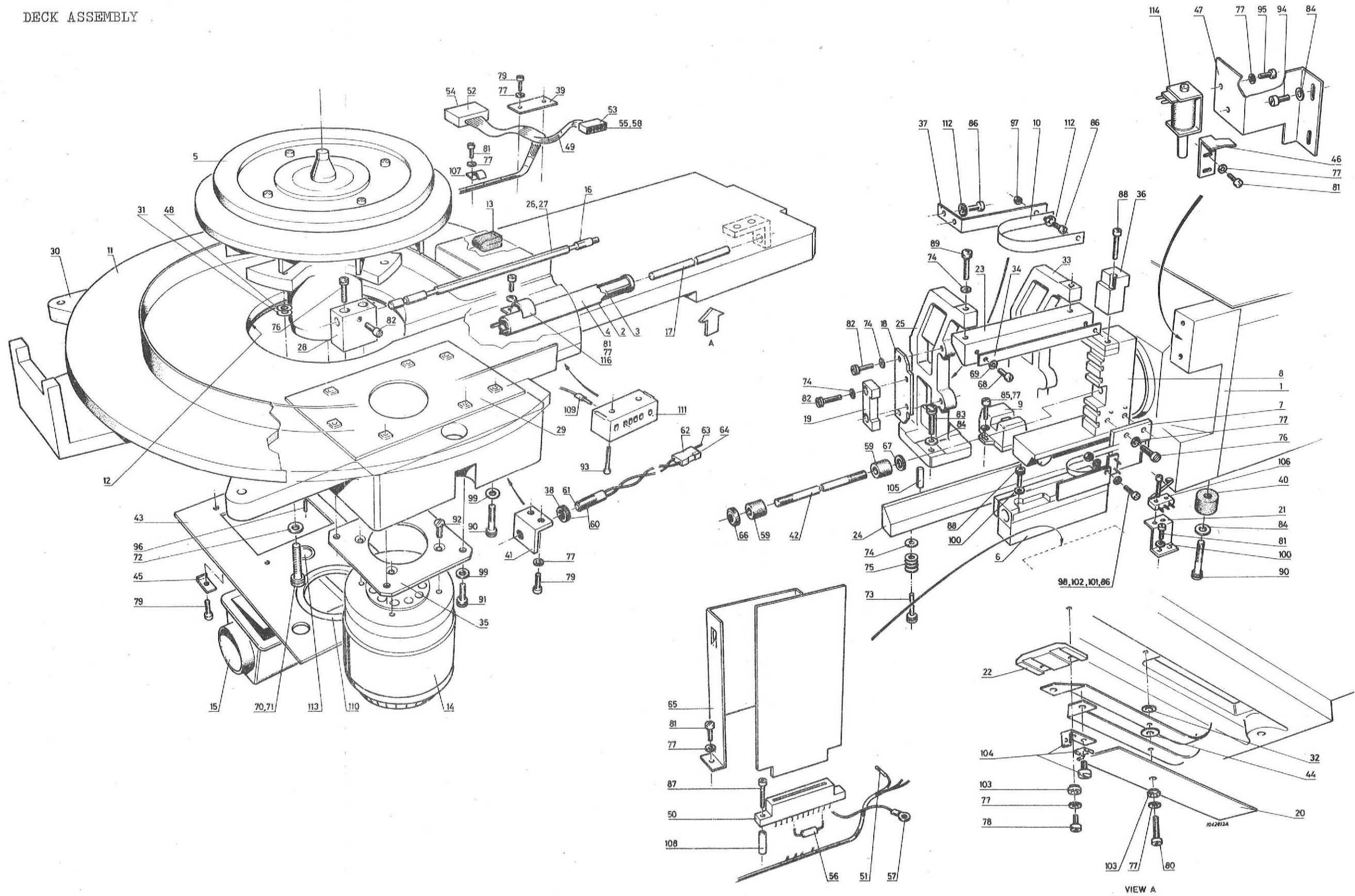
FRAME



FRAME

Item nr	Part number	Description	Qty. per ass'y
54D	2522 006 03205	Allen screw M5 x 10	4
55D	2522 600 16029	Ring 5,3 x 10	4
56D	2522 613 03012	Washer 5,1 x 8,7	4

DECK ASSEMBLY



DECK ASSEMBLY

Item nr	Part number	Description	Qty. per ass'y
B	5122 299 08800	Main assembly	1
C	5122 299 08900	Deck assembly	1
1D	5122 289 86900	Magnet house assembly	1
2D	5122 289 86990	Coil house assembly	1
3E	5122 289 87000	Coil assembly	1
4E	5122 200 08420	Pipe	1
5D	5122 289 87050	Spindle assembly	1
6D	5122 289 87550	Secondary meander assembly	1
7D	5122 289 87790	Primary meander assembly	1
8D	5122 289 93160	Carriage assembly	1
9D	5122 289 97620	Index unit assembly	1
10D	5122 289 94120	Earth strip assembly	1
11D	5122 290 03380	Bottom assembly	1
12E	1222 100 98329	Foam rubber EKI500 5x5 long 0,15 m	1
13E	1222 100 98281	Foam rubber self adhesive 6x10 long 0,03m	1
14D	5122 200 10180	Drive motor	1
15D	5122 289 99480	Connecting house	1
16D			
17D	5122 200 08300	Magnetic core	1
18D	5122 200 09890	Plate	1
19D	5122 200 09900	Relief cam	1
20D	5122 200 09920	Strip	1
21D	5122 200 09950	Bracket	1
22D	5122 200 09980	Plate	1
23D	5122 200 10090	Guide rule upper	1
24D	5122 200 10100	Guide rule lower	1
25D	5122 200 10160	Front support	1
26D			
27D	5122 200 39270	Compensation rod	1
28D	5122 200 39260	Clamping block	1
29D	5122 200 15680	Motor fastening plate	1
30D	5122 200 15880	Ground plate	1
31D	5122 200 16800	Washer 0.1 mm	6
32D	5122 200 24630	Ring	1
33D	5122 200 26530	Rear support	1
34D	5122 200 26830	Reading rule	1
35D	5122 200 28390	Motor plate	1
36D	5122 200 33070	Block	1
37D	5122 200 33110	Bracket	1
38D	5122 200 33250	Lock nut	1
39D	5122 200 37420	Clamping piece	1
40D	5122 200 37440	Spacer	3
41D	5122 200 37450	Fastening bracket	1
42D	5122 200 37460	Rod	1
43D	5122 200 38280	Closing plate	1
44D	5122 200 38490	Ring	1
45D	5122 200 43170	Clamping bracket	4
46D	5122 200 43860	Blocking bracket	1
47D	5122 200 43870	Mounting bracket	1
48D	5122 233 11100	Spacer	6

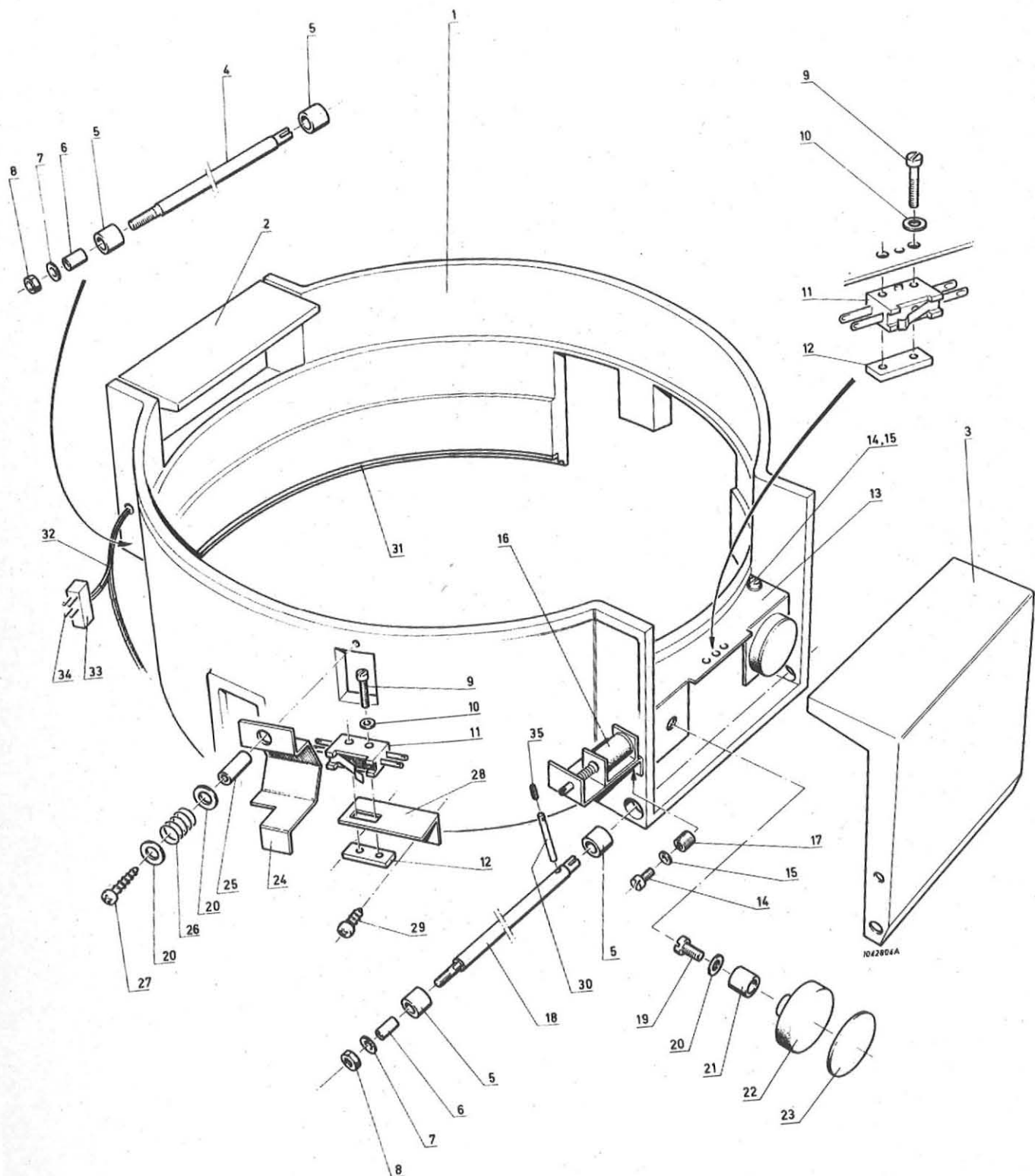
DECK ASSEMBLY

Item nr	Part number	Description	Qty. per ass'y
49D	5122 289 96860	Cable P4	1
50E	2422 037 01012	Connector 2x10 pins	1
51E	2422 034 10274	Receptacle	5
52E	2422 034 10794	Connector 20 pins	1
53E	2422 034 10795	Connector 10 pins	1
54E	2422 034 10788	Socket connector	18
55E	2422 034 10803	Key, position	2
56E	2222 143 87108	Capacitor 1 μ F 35V 10%	2
57E	2422 015 02154	Eye cable tag	1
58E	2422 034 10789	Socket connector	6
59D	5122 255 51110	Buffer	2
60D	5122 289 97540	Pick up assembly	1
61E	5122 021 20040	Pick up	1
62E	2422 034 10797	Connector, 2 pins	1
63E	2422 034 10913	Contact pin	1
64E	2422 034 10789	Contact socket	1
65D	5122 200 38500	Meander housing	1
66D	2522 411 01011	Knurled nut, M4	1
67D	2522 600 16027	Washer, 43x12	1
68D	2522 001 08097	Screw M3x6, Brass	2
69D	2522 600 10017	Washer 32x7 Brass	2
70D	2522 006 03059	Socket screw M6x40	2
71D	2522 006 03056	Socket screw M6x25	1
72D	2522 613 12014	Spring ring 6,1x11,1	3
73D	2522 006 03028	Socket screw M4x30	2
74D	2522 600 16026	Washer 4,3x4	8
75D	2622 115 10001	Cupped spring washer 8x4,2x0,3	4
76D	2522 006 03004	Socket screw M3x10	4
77D	2522 600 16017	Washer 3,2x7	22
78D	2522 004 02028	Screw M3x15	2
79D	2522 004 02025	Screw M3x8	8
80D	2522 004 02027	Screw M3x12	1
81D	2522 004 02024	Screw M3x6	15
82D	2522 006 03021	Socket screw M4x10	5
83D	2522 006 03037	Socket screw M5x20	6
84D	2522 600 16029	Washer 5,3x10	16
85D	2522 004 02026	Screw M3x10	2
86D	2522 001 08776	Screw M2,5x6, Brass	1
87D	2522 004 02033	Screw M3x30	2
88D	2522 006 03012	Socket screw M3x25	3
89D	2522 006 03025	Socket screw M4x20	2
90D	2522 006 03041	Socket screw M5x30	6
91D	2522 006 03034	Socket screw M5x10	4
92D	2522 018 01048	Counter sunk M5x8	4
93D	2522 004 02031	Screw M3x20	2
94D	2522 004 02054	Screw M5x10	2
95D	2522 004 02022	Screw M3x4	2
96D	2522 040 47045	Adjusting screw M3x6	2
97D	2522 401 60008	Nut M3	1
			1

DECK ASSEMBLY

Item nr	Part number	Description	Qty. per ass'y
98D	2522 401 05064	Nut M2,5	1
99D	2522 600 16029	Washer 5,3x10	2
100D	2522 600 16018	Washer 3,2x9	4
101D	2522 600 10137	Washer 2,7x6,5 Brass	1
102D	2522 613 01003	Spring ring 2,7x4,7	1
103D	9390 000 40112	Insulating sleeve	3
104D	2422 034 14035	Faston Tab.	2
105D	2522 670 03072	Dowel pin 5x18	2
106D	2422 120 00291	Switch Honeywell	1
107D	2413 015 00137	Cable clamp Nx1	3
108D	2522 627 01026	Distance piece 3,1x5x16	2
109D	2422 015 02208	Pin connector Red	3
110D	0822 026 98125	Ornamental profile, long 0,2 m	1
111D	2412 013 00032	Connecting block, 6 polig	1
112D	2522 608 02001	Earth ring	4
113D	2412 015 09064	Stop 15,6x20	1
114D	2412 534 00082	Elect. magnet	1
115D	2422 135 00128	Accessory	1
116D	2522 705 15109	Mounting bracket	2

CARTRIDGE HOLDER



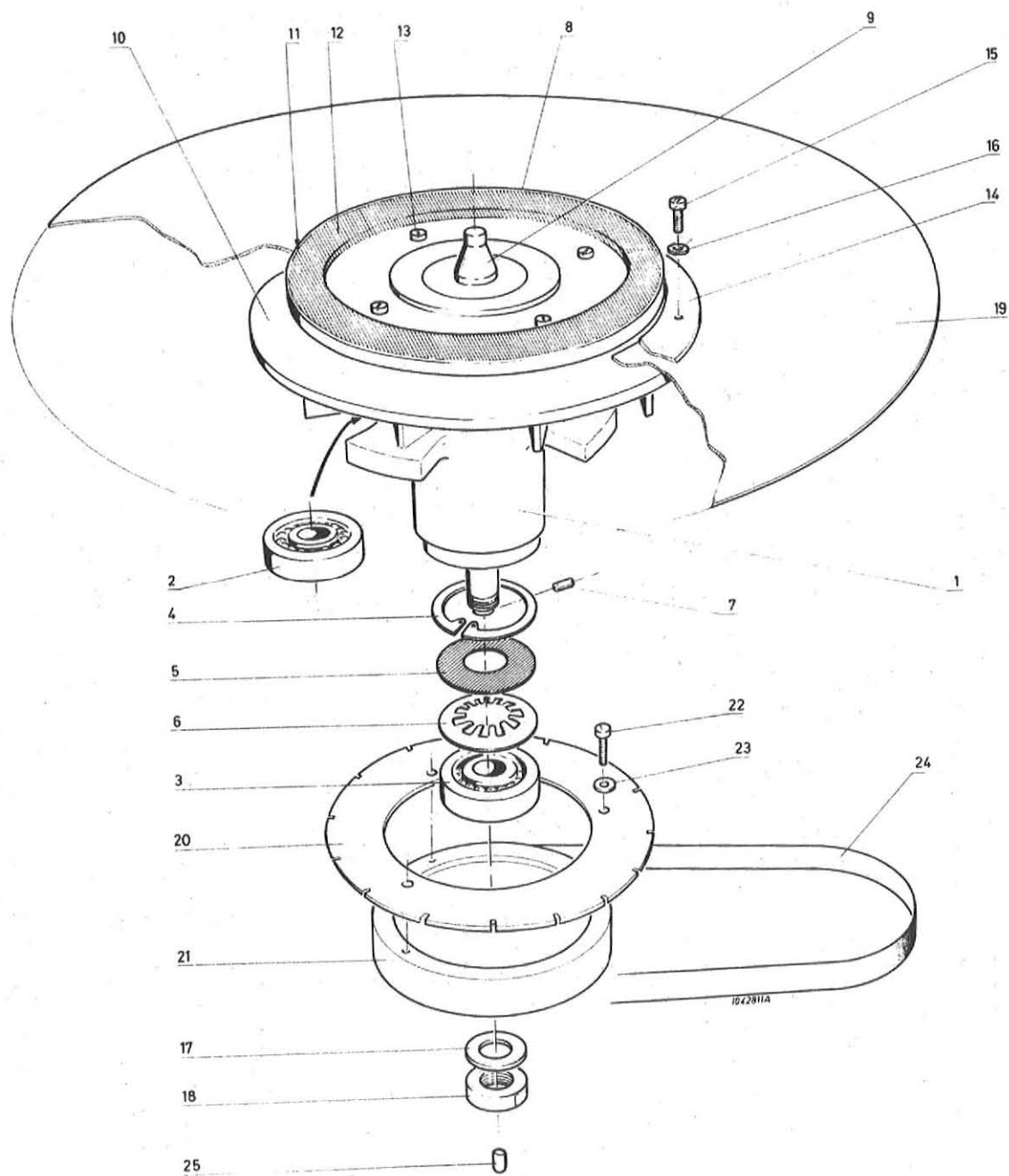
7405

X1215

CARTRIDGE HOLDER

Item nr	Part number	Description	Qty. per ass'y
B	5122 299 08800	Main assembly	1
C	5122 299 09300	Cartridge holder	1
1D	5122 289 89630	Cartridge holder lacquered	1
2D	5122 289 86740	Clamp assy 2 left	1
3D	5122 289 86730	Clamp assy 2 right	2
4D	5122 200 01030	Shaft	1
5D	5122 200 01050	Bearing	4
6D	5122 200 01040	Clamping bush	2
7D	2522 600 16029	Washer 5,3 x 10 mm	2
8D	2522 401 60012	Nut M5	2
9D	2522 004 02006	Screw M2 x 12	6
10D	2522 600 16151	Washer 2,2 x 5 mm	6
11D	2411 123 02076	Microswitch	3
12D	5122 200 13030	Nut plate	3
13D	5122 200 13000	Mounting bracket	2
14D	2522 004 02039	Screw M4 x 8	6
15D	2522 613 03009	Spring washer 4,1 x 7,1 mm	6
16D	5122 289 87490	Lock magnet assy	1
17D	2522 707 01004	Tap nut M 4 x 6,5	12
18D	5122 200 29180	Shaft	1
19D	2522 004 02038	Screw M 4 x 6	4
20D	2522 600 16027	Washer 4,3 x 12 mm	5
21D	5122 200 13040	Clamping bush	4
22D	2412 534 10005	Magnet type 2420, 32 Ø	4
23D	5122 200 13020	Damping plate	4
24D	5122 200 36050	Switch bracket	1
25D	5122 200 36070	Spacer	1
26D	5122 200 36080	Compression spring	1
27D	2522 163 01027	Cross slotted tap screw 6N x 16	1
28D	5122 200 36060	Mounting bracket	1
29D	2522 163 01023	Cross slotted tap screw 6	2
30D	5122 200 18900	Pin	1
31D	1222 100 98256	Foam rubber 5 x 7 mm 0,95 m long	
32D	5122 289 95950	Cable assy	1
33D	2422 034 10908	Connector housing 6p	1
34D	2422 034 10918	Contact pin	4

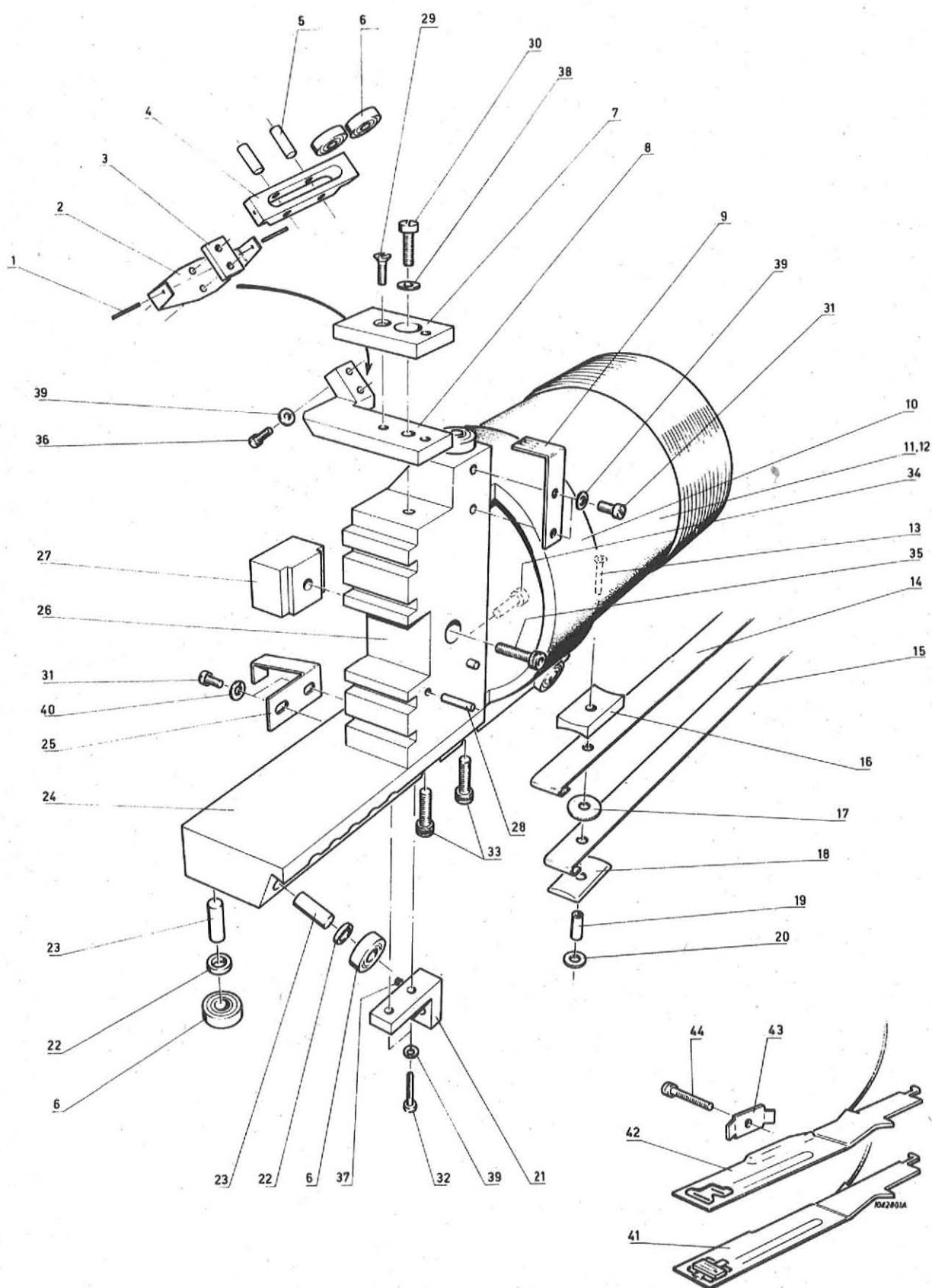
SPINDLE



SPINDLE

Item nr	Part number	Description	Qty. per ass'y
A	5122 299 13700	Final assembly	1
B	5122 299 08800	Main assembly	1
C	5122 299 08900	Deck assy	1
D	5122 289 87050	Spindle assy, complete	1
1E	5122 200 14840	Bearing house	1
2E	2622 001 30954	Ball bearing GMN 6005 up 2Z	1
3E	2622 001 30737	Ball bearing GMN 6203 P5 2Z	1
4E	2522 629 02027	Inner retaining ring	1
5E	5122 201 21100	Ring	1
6E	2622 115 09112	Star spring 39,7 x 23 x 0,9	1
7E	2522 043 02037	Adjusting screw M 3 x 4	1
8E	5122 289 88820	Spindle assy	1
9F	5122 200 14820	Spindle	1
10F	5122 200 14810	Carrying disk	1
11F	5122 200 14910	Magnet holder	1
12F	5122 200 14920	Magnet ring	1
13F	2522 001 17169	Screw M 4 x 8	4
14C	5122 200 14850	Clamping disk	1
15C	2522 001 17169	Screw M 4 x 8	6
16C	5122 200 24630	Ring	6
17C	2522 716 10031	Ring	1
18C	2622 890 02003	Spindle nut SKF KM/2 M15 x 1	1
19B	5122 021 02010	Memory disk	1
20B	5122 200 26070	Index ring 16 slots	1
21B	5122 200 23640	Puley	1
22B	2522 004 02039	Screw M 4 x 8	3
23B	2522 600 16026	Lock ring 4,3 x 9	3
24B	5122 020 41740	Belt 50 CS/S	1
25B	5122 200 43140	Contact pin	1

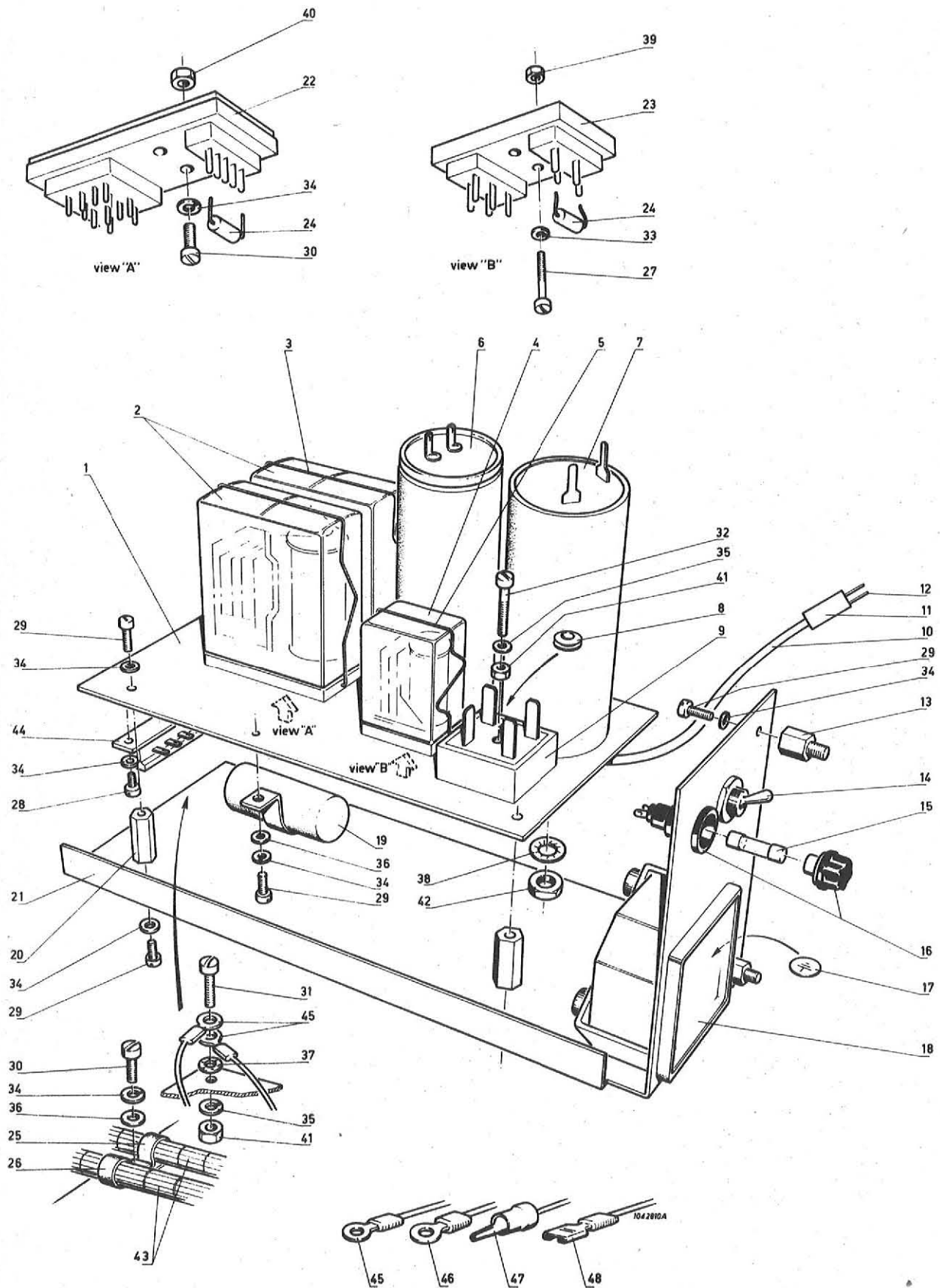
CARRIAGE



CARRIAGE

Item nr	Part number	Description	Qty. per ass'y
C	5122 299 08900	Deck assy	1
D	5122 289 93160	Carriage assy	1
1E	2522 670 01019	Pin 1,5 x 8	2
2E	5122 200 10080	Flat spring	1
3E	5122 200 09870	Plate	1
4E	5122 200 09840	Bearing holder	1
5E	5122 259 01110	Bearing pin 12 mm	2
6E	5122 020 40701	Bearing D 893-713-LG20	7
7E	5122 200 33060	Plate	1
8E	5122 200 09860	Bracket	1
9E	5122 200 26810	Vernier	1
10E	5122 200 26450	Voice coil holder	1
11E	5122 289 86260	Voice coil assy	1
12E	5122 289 86250	Voice coil	1
13E	2522 642 04046	Cyclet 2 x 0,3 x 8	1
14E	5122 289 86280	Strip guide	1
15E	5122 289 86290	Strip guide	1
16E	5122 200 08250	Spacer	1
17E	5122 200 37310	Ring	1
18E	5122 200 08240	Washer plate	1
19E	5122 200 08260	Insulating can	1
20E	5122 600 16151	Washer 2,2 x 5	1
21E	5122 200 09940	Lower plate	1
22E	5122 200 08310	Ring	5
23E	5122 259 11110	Bearing pin 16 mm	5
24E	5122 200 10070	Lower plate	1
25E	5122 200 09910	Vane	1
26E	5122 200 10130	Mounting block heads	1
27E	5122 200 26020	Block	1
28E	2522 670 01045	Pin 3 x 8	2
29E	2522 018 01026	Screw, countersunk M 3 x 10	1
30E	2522 006 03022	Screw M 4 x 12	1
31E	2522 004 02024	Screw M 3 x 6	4
32E	2522 004 02027	Screw M 3 x 12	2
33E	2522 006 03025	Allen screw M 4 x 20	2
34E	2522 006 03021	Allen screw M 4 x 10	2
35E	2522 006 03006	Allen screw M 3 x 12	1
36E	2522 004 02025	Screw M 3 x 8	2
37E	2522 040 31235	Adjusting screw M 2,5 x 9	1
38E	2522 600 16026	Washer 4,3 x 9	1
39E	2522 600 16017	Washer 3,2 x 7	4
40E	2522 609 02003	Lock washer	2
41	5122 289 87380	Head assy, U-100-1	2
42	5122 289 87370	Head assy, D-100-1	2
43	5122 261 11110	Mounting plate	6
44	2522 006 03012	Allen screw M 3 x 25	6

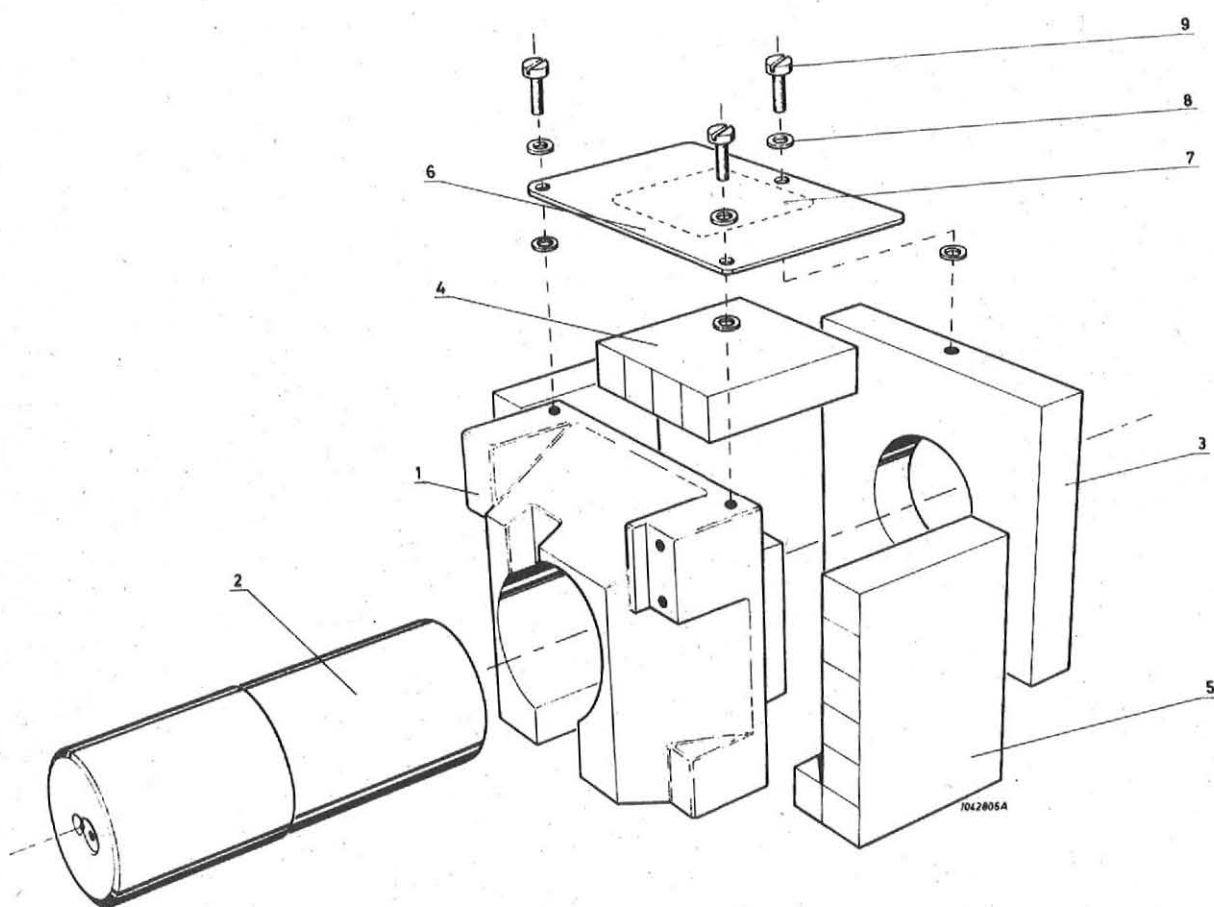
SWITCHING UNIT



SWITCHING UNIT

Item nr	Part number	Description	Qty. per ass'y
C	5122 289 97520	Frame assy	1
D	5122 289 96910	Switching unit	1
1E	5122 200 36520	Relay plate	1
2E	2422 132 01835	Relay V 23006 G 1012-A 034	2
3E	2422 135 03284	Clamping spring V 23006 - Z 1003	2
4E	2422 132 01834	Relay V 23154 - C 0721 F 105	1
5E	2422 135 03217	Clamping spring V 23154 - Z 1021	1
6E	2012 206 09009	Capacitor, MP 33/10/240A	1
7E	2012 300 20005	Interference filter	1
8E	2422 015 09035	Grommet 4,5 x 1	1
9E	9332 351 50682	Bridge rectifier G 775-2	1
10E	5122 289 96670	Cable CPS	1
11E	2422 034 10908	Connector 6p	1
12E	2422 034 10913	Contact pin	6
13E	5122 200 36500	Spacer	2
14E	2422 125 01137	Tumbler switch	1
15E	2422 086 00046	Fuse 3,15A	1
16E	2422 092 00001	Fuse holder	1
17E	2812 100 23001	Ground symbol 3S 10rd	1
18E	2622 799 05038	Logtimer	1
19E	2012 500 10002	Interference capacitor AZ 405	1
20E	5122 200 36510	Spacer	4
21E	5122 200 36530	Mounting plate	1
22E	2422 135 03283	Relay socket V 23006-Z 1001	2
23E	2422 135 03232	Relay socket V 23154-Z 1005	1
24E	9330 458 51112	Diode BYX 36/600	3
25E	2413 015 00139	Cable clamp 6	1
26E	2413 015 00137	Cable clamp	1
27E	2522 004 02137	Screw M 2,5 x 10	1
28E	2522 004 02022	Screw M 3 x 4	2
29E	2522 004 02024	Screw M 3 x 6	11
30E	2522 004 02025	Screw M 3 x 8	3
32E	2522 004 02045	Screw M 4 x 20	1
33E	2522 613 01003	Spring washer 2,7 x 4,7	1
34E	2522 613 03005	Spring washer 3,1 x 5,7	16
35E	2522 613 03009	Spring washer 4,1 x 7,1	3
36E	2522 600 16017	Lock ring	2
37E	2522 608 02002	Ground ring	2
38E	2522 615 04043	Spring washer 8,2	1
39E	2522 401 60064	Nut M 2,5	1
40E	2522 401 60008	Nut M3	2
41E	2522 401 60011	Nut M4	3
42E	2522 400 02011	Nut M8	1
43E	5122 289 96520	Cable S.U.	1
44E	2422 010 10802	Mounting support	1
45E	2422 015 02156	Cable tag M4 x 1,5	4
46E	2422 015 02157	Cable tag M5 x 1,6	1
47E	2422 015 02208	Cable tag 1,5	7
48E	2422 015 02862	Cable tag red	4

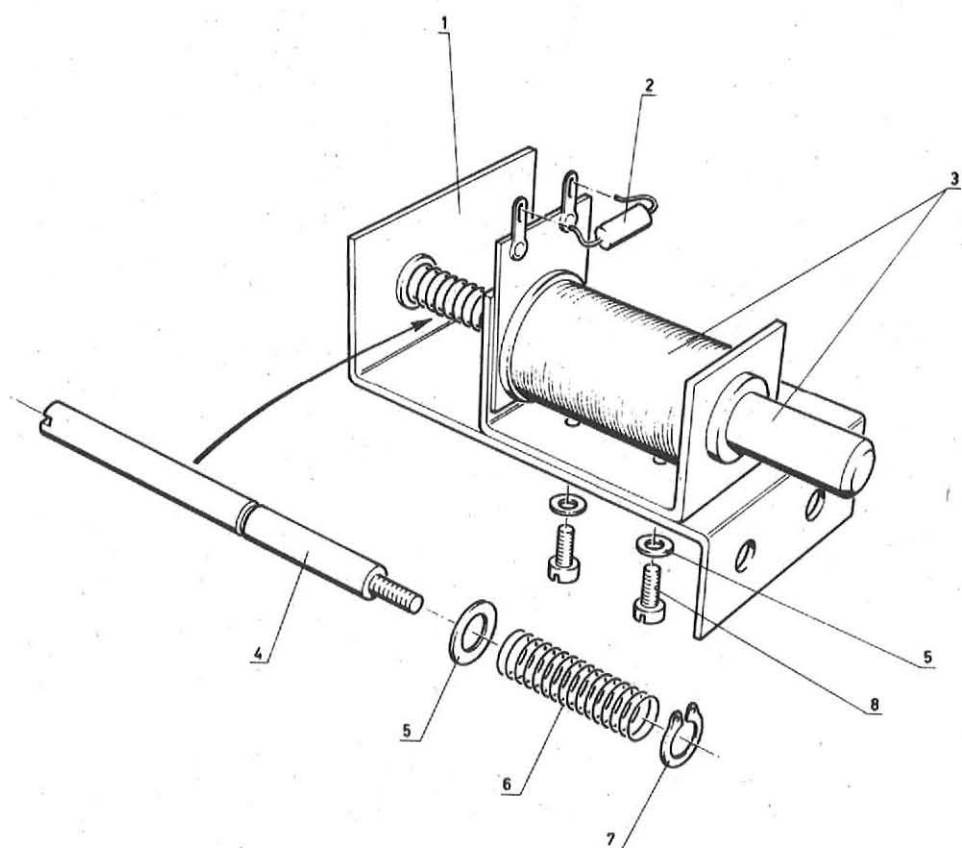
MAGNET HOUSE



MAGNET HOUSE

Item nr	Part number	Description	Qty. per ass'y
C	5122 299 08900	Deck assembly	1
D	5122 289 86900	Magnet house assy	1
1E	5122 200 24220	Frontplate	1
2E	5122 200 10110	Core	1
3E	5122 200 10150	Rear plate	1
4E	5122 200 14270	Magnet	1
5E	5122 200 14280	Magnet	2
6E	5122 200 14290	Protection plate	1
b7E	5122 200 04350	Sticker	1
8E	2522 600 16029	Washer 5,3 x 10	6
9E	2522 004 02054	Cyl. screw M 5 x 10	3

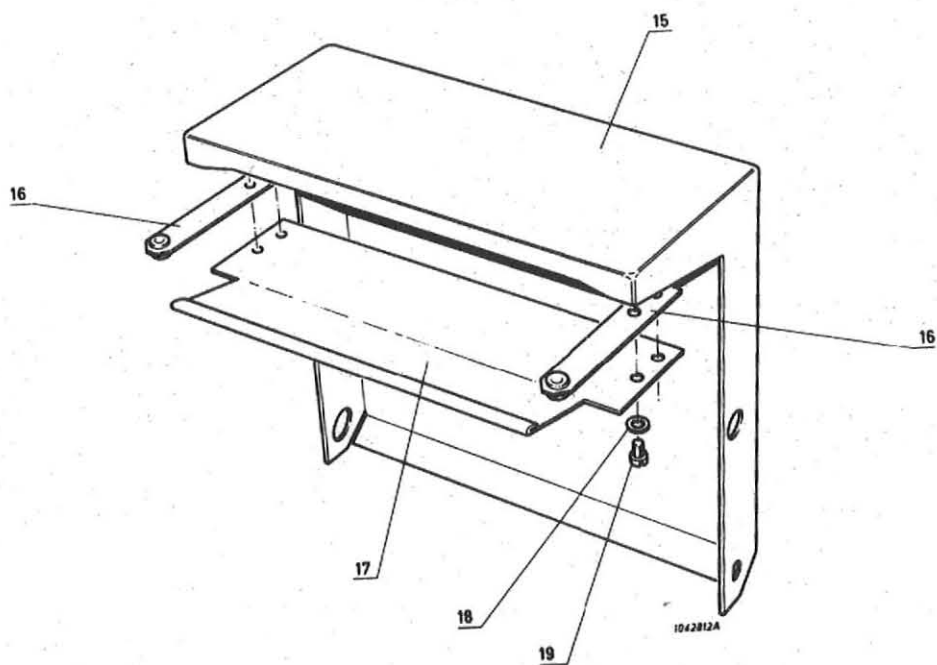
LOCK MAGNET



LOCK MAGNET

Item nr	Part number	Description	Qty. per ass'y
C	5122 299 09300	Cartridge holder assy	1
D	5122 289 87490	Lock magnet assy	1
1E	5122 200 13640	Mounting bracket	1
2E	9330 458 51112	Diode BYX 36/600	1
3E	2412 534 00058	Magnet	1
4E	5122 200 25900	Pin	1
5E	2522 600 16017	Washer 3,2 x 7 mm	3
6E	5122 200 25910	Compression spring	1
7E	2522 634 04005	Retaining ring 2,3 mm	1
8E	2522 004 02024	Screw M3 x 6	2

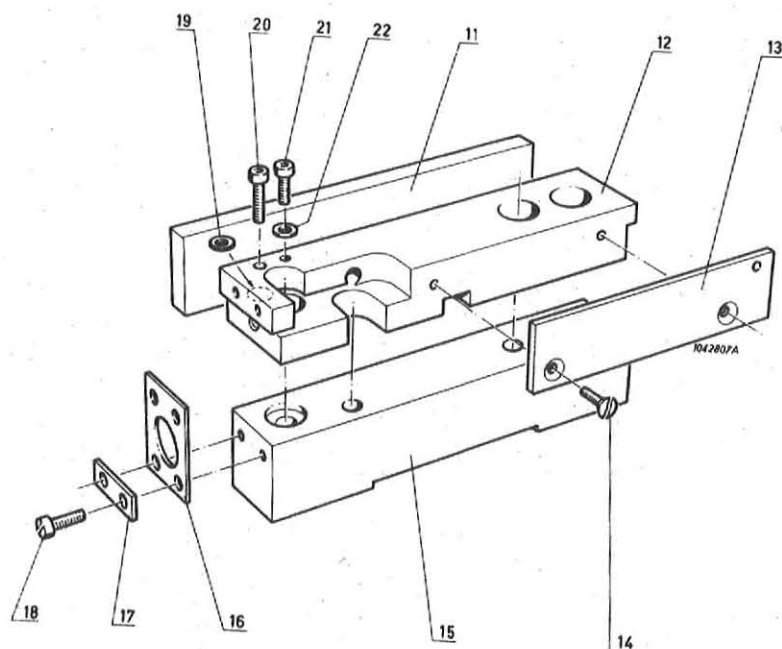
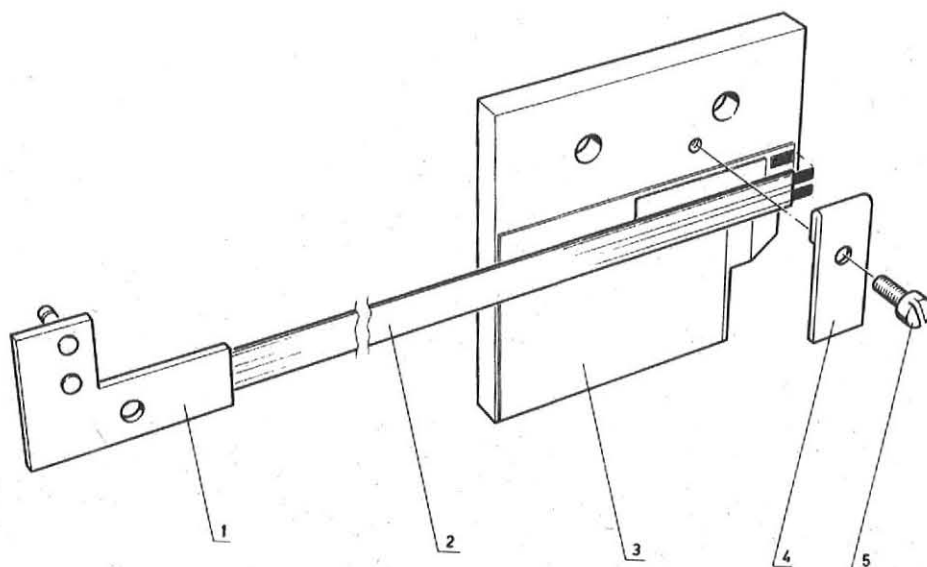
CLAMP LEFT/CLAMP RIGHT



CLAMP LEFT/CLAMP RIGHT

Item nr	Part number	Description	Qty. per ass'y
D	5122 289 86730	Clamp-right	1
D	5122 289 86740	Clamp-left	1
17E	5122 200 01010	Protection plate	2
15E	5122 289 86710	Clamp (right)	1
15E	5122 289 86720	Clamp (left)	1
16E	5122 289 88760	Pression spring	4
18E	2522 600 16017	Washer 3,2 x 7 mm	8
19E	2522 004 02022	Screw M 3 x 4	8

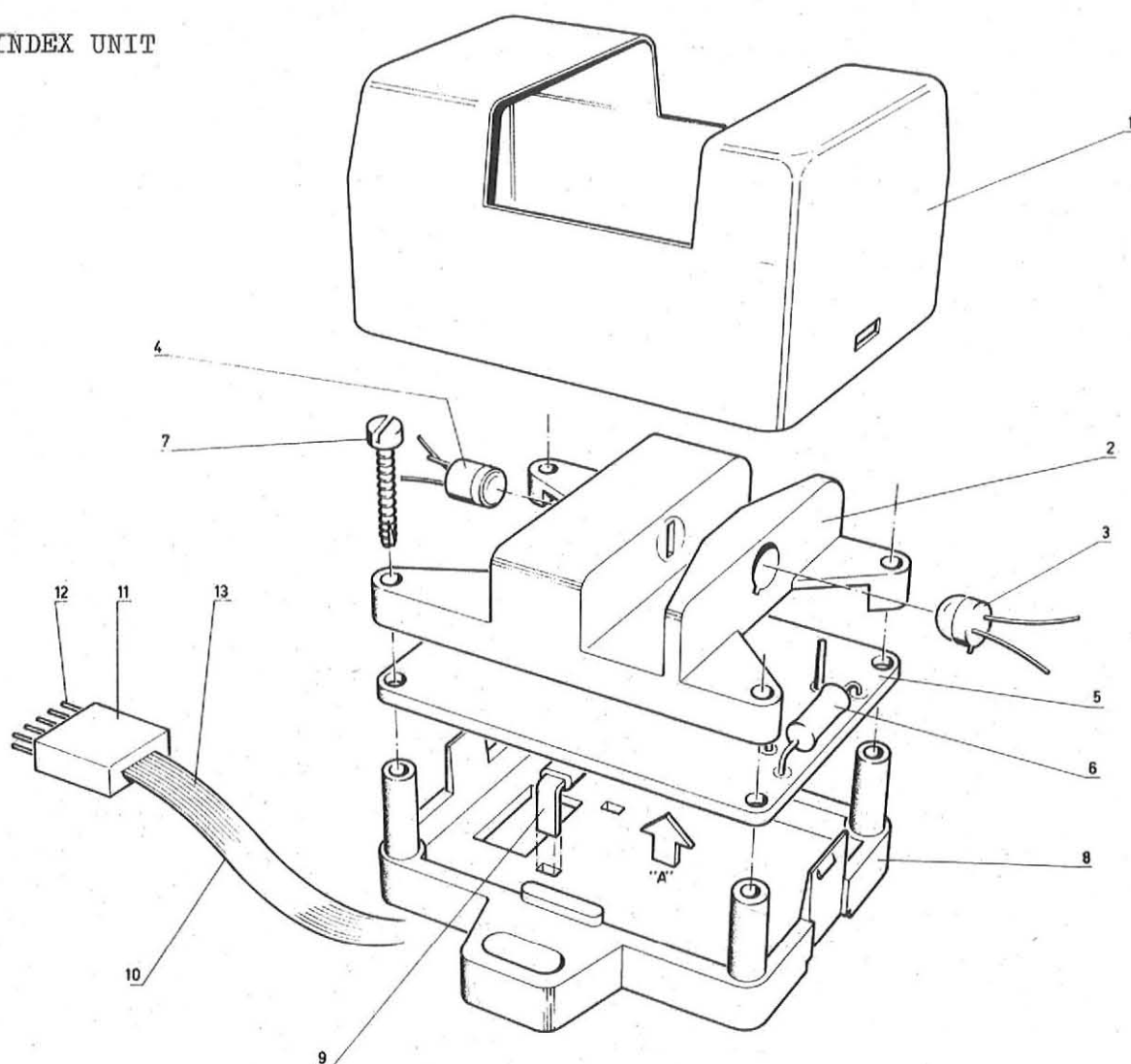
PRIME AND SEC MEANDER



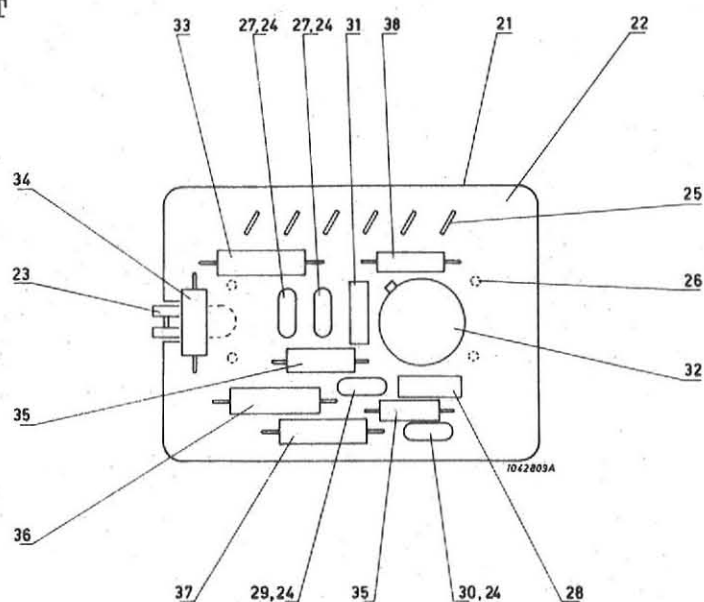
PRIME AND SEC MEANDER

Item nr	Part number	Description	Qty. per ass'y
C	5122 299 08900	Deck assembly	1
D	5122 289 87790	Primary meander assembly	1
1E	5122 289 89470	Connecting cable assembly	1
2E	5122 289 83800	Flat cable	1
3E	5122 289 88990	Primary meander plate	1
4E	5122 200 14560	Clamps	1
5E	2522 004 02135	Screw M 2.5 x 4	1
D	5122 289 87550	Secondary meander assembly	1
11E	5122 200 24820	Secondary meander plate	1
12E	5122 200 39010	Meander block	1
13E	5122 200 26430	Plate	1
14E	2522 017 04381	Screw countersunk M 2.5 x 6	2
15E	5122 200 16810	Plate	1
16E	5122 200 07450	Spring	2
17E	5122 200 07590	Clamping plate	4
18E	2522 004 02137	Screw M 2.5 x 6	8
19E	2522 600 16017	Washer 3.2 x 7	1
20E	2522 006 03004	Allen screw M 3 x 10	1
21E	5122 200 07480	Adjusting screw	1
22E	5122 200 07580	Spacer ring	

INDEX UNIT



PCBA U1 INDEX UNIT



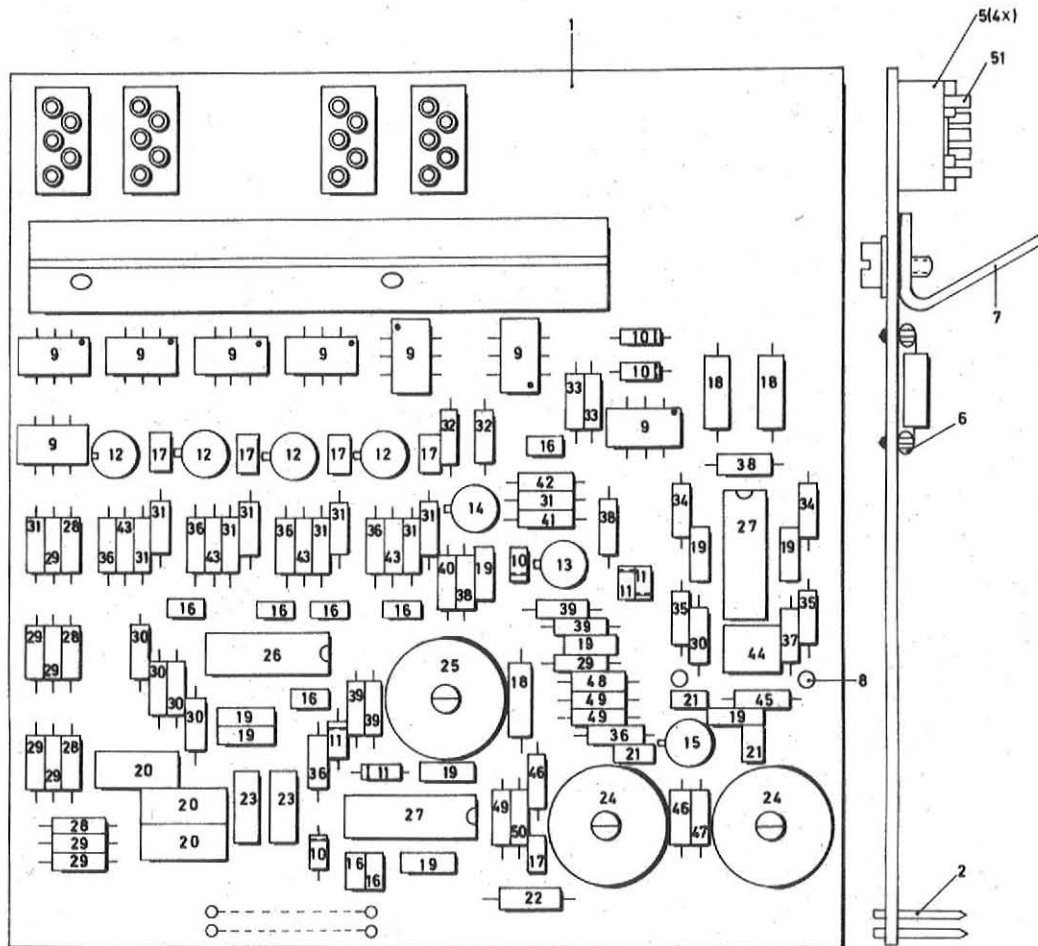
INDEX UNIT

Item nr	Part number	Description	Qty. per ass'y
C	5122 299 08900	Deck assy	1
D	5122 289 97620	Index Unit	1
1E	5132 101 31100	Cover	1
2E	5132 101 11100	Holder	1
3E	9331 621 10112	L.E.D. ME4	1
4E	9330 619 20112	Photo-transistor BPX 25	1
5E	5132 198 11100	P.C.B.A. U1	1
6E	2322 152 57509	Resistor 75 E $\frac{1}{4}$ W 1% or	1
7E	2512 200 17029	Screw type 1 - 2 x $\frac{1}{2}$ "	4
8E	5132 101 01100	Bottom injection moulding	1
9E	5132 197 51100	Bracket	1
10E	5122 289 97660	Cable assy	1
11E	2422 034 10795	Connector housing 10 pins	1
12E	2422 034 10913	Contact pin	8
13E	5122 021 70021	Cable 48 cores, length: 150 mm	1

PCPA U1 INDEX UNIT

Item nr	Part number	Description	Qty. per ass'y
D	5122 289 97620	Index Unit	1
21E	5132 198 11100	PCBA U1	1
22F	5132 101 61100	Board	1
23F	5132 101 21100	Contact spring	1
24F	3522 103 77401	Washer	4
25F	4032 814 17780	Solder eyelet	6
26F	4322 027 65941	Solder eyelet long	6
27F	2222 630 01392	Capacitor 3900 pF, 100V, $\pm 10\%$	2
28F	2022 552 00037	Capacitor 0,1 μ F, 25V	2
29F	2222 631 09688	Capacitor 6,8 pF, 63V	1
30F	2222 630 01102	Capacitor 1000 pF, 100V, $\pm 10\%$	1
31F	2022 552 00037	Capacitor 0,1 μ F, 25V	1
32F	9331 661 40112	I.C. MC 1710 CG	1
33F	2322 152 51214	Resistor 121 K ohm	1
34F	2322 151 52613	Resistor 26,1 K ohm $\frac{1}{8}$ W $\pm 1\%$	1
35F	2322 151 51002	Resistor 1 K ohm $\frac{1}{8}$ W $\pm 1\%$	2
36F	2322 152 51964	Resistor 196 K ohm $\frac{1}{4}$ W $\pm 1\%$	1
37F	2322 152 53014	Resistor 301 K ohm $\frac{1}{4}$ W $\pm 1\%$	1
38F	2322 151 53161	Resistor 316 ohm $\frac{1}{8}$ W $\pm 1\%$	1

PCBA, READ PREAMPLIFIER



PCBA, READ PREAMPLIFIER

Item nr	Part number	Description	Qty. per ass'y
A	5122 099 13700	Final assembly	1
B	5122 289 96440	PCBA, Read Preamplifier	1
1C	5122 200 36370	Board, 6014	1
2C	2422 034 10892	WRAP-pin	18
3C	3522 103 77401	Base, capacitor	13
4C	9390 155 30112	Foot, transistor, TO-18	7
5C	5122 289 89780	Plug housing, assy	4
6C	3522 020 15360	Glass bead	
7C	5122 200 18560	Bracket, print	1
8C	2422 034 10892	Pin	2
9C	9331 041 10112	Diode, BAY512	8
10C	9331 012 20112	Diode, BAW62	4
11C	9331 177 40112	Diode, BZX79 C6V2	4
12C	9330 894 90112	Transistor, 2N2222A	4
13C	9330 219 20112	Transistor, BSX20	1
14C	9330 441 00112	Transistor, BCY70	1
15C	9330 116 40112	Transistor, BCY90	1
16C	2222 629 02103	Capacitor, CER, 10nF -20/+100% 40V	7
17C	2222 631 58479	Capacitor, CER, 47pF +2% 100V	5
18C	2222 426 45101	Capacitor, Micropoco, 510pF +1% 250V	2
18C-A	2222 425 45101	Capacitor, Micropoco, 510pF +1% 125V	1
19C	2222 629 03223	Capacitor, CER, 22nF -20/+100% 40V	10
20C	2222 344 90101	Capacitor, MPR, 0,1 μ F 10% 100V	3
21C	2222 631 10829	Capacitor, CER, 82pF 2% 100V	1
21C-A	2222 631 10189	Capacitor, CER, 18pF 2% 100V	2
22C	2222 143 87337	Capacitor, Electrolyte, 0,33 μ F, 10% 35V	1
23C	2422 535 00221	Coil, microchoke, 220 μ H	2
24C	5122 283 31110	Coil, assy, 40 μ H	2
25C	5122 283 41110	Coil, assy, 2 μ H	1
26C	9380 000 60000	Integrated circuit, SN7404N	1
27C	9332 085 80682	Integrated circuit, UGA 7733.393	2
28C	2322 151 55119	Resistor, 51,1 ohm, 1% 125mW	4
29C	2322 151 56819	Resistor, 68,1 ohm, 1% 125mW	9
30C	2322 151 54649	Resistor, 46,4 ohm, 1% 125mW	4
31C	2322 151 51003	Resistor, 10K, 1% 125mW	9
32C	2322 151 51782	Resistor, 1K78, 1% 125mW	2
33C	2322 151 52612	Resistor, 2K61, 1% 125mW	2
34C	2322 151 54642	Resistor, 4K64, 1% 125mW	2
35C	2322 151 51213	Resistor, 12K1, 1% 125mW	2
36C	2322 151 53162	Resistor, 3K16, 1% 125mW	5
37C	2322 151 54649	Resistor, 46,4 ohm, 1% 125mW	1
38C	2322 151 55629	Resistor, 56,2 ohm, 1% 125mW	3
39C	2322 151 51781	Resistor, 178 ohm, 1% 125mW	4
40C	2322 151 51473	Resistor, 14K7, 1% 125mW	1
41C	2322 151 52152	Resistor, 2K15, 1% 125mW	1
42C	2322 151 51002	Resistor, 1K, 1% 125mW	1
43C	2322 151 51471	Resistor, 147 ohm, 1% 125mW	4
44C	2113 375 00022	Potentiometer, Morganite, 100 ohm	1
45C	2322 151 53832	Resistor, 3K83, 1% 125mW	1
46C	2322 151 51001	Resistor, 100 ohm, 1% 125mW	2

PCBA, READ PREAMPLIFIER

